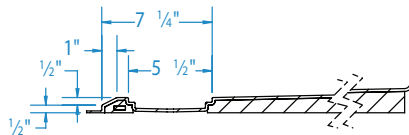
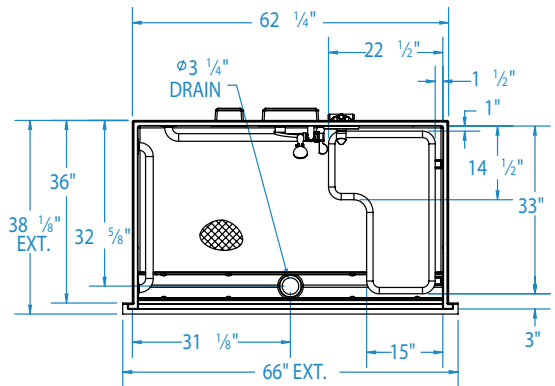
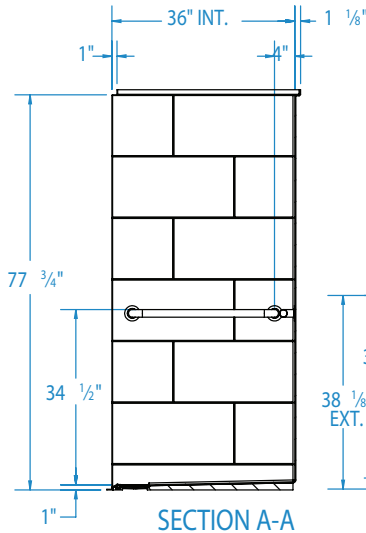
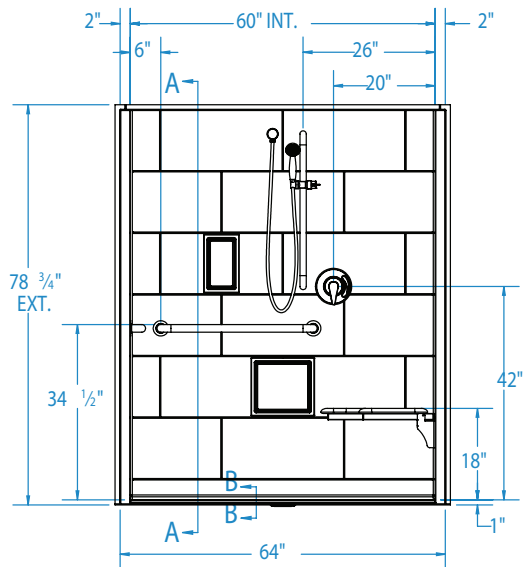


TECHNICAL SPECIFICATIONS

APFXST6238LDCOL

Interior: 60 x 36 x 76 ³/₄
Exterior: 66 x 38 ¹/₈ x 78 ³/₄
inches

ADA/ANSI compliant when fully equipped
and installed according to guidelines.



SECTION B-B
(Trench grate (Included) not shown)

Shown with available seat, grab bars,
soap dishes and plumbing fixtures

FEATURES lbs Dimensional Tolerance $\pm \frac{3}{8}$ ". Dimensions needed for site preparation should be measured from the unit. Manufacturer assumes no responsibility for preparatory work.

Type and Model #	Material	Wall Finish	Pieces	Drain	Dam/Skirt Height	Net Wt.	Pkg. Wt.
Shower XST6238TR COL	applied acrylic	Smooth tile	1	Center Front	$\frac{1}{2}$ " skirt $\frac{1}{2}$ " exterior COL threshold	200	210

DIMENSION S

Specifications	inches
Width: Ext. / Int.	66 / 60
Depth: Ext. / Int.	38 ¹ / ₈ / 36
Height: Ext. / Int.	78 ³ / ₄ / 76 ³ / ₄
Enclosure Opening:	60
Skirt Height:	$\frac{1}{2}$
Drain Rough-In (from Back Wall)	32 ⁵ / ₈
Drain Rough-In (from Side Wall)	31 ¹ / ₈

FRAMING DIMENSIONS

Type	D Depth	W Width	H Height	A	B	C
Alcove	36	62 ¹ / ₄	—	Box Out	31 ¹ / ₈	32 ⁵ / ₈

