



ACCESSIBILITY PROFESSIONALS
ADA Tub Showers

3 Piece ADA Tub/Shower APTG3260TSADA3P



60"L x 32.5"D x 80.25"H

3 piece sectional for remodeling.

Easy to clean smooth wall high gloss applied acrylic.

Available with or without accessories.

For ADA compliance, add the factory installed ADA accessory package. Package includes: 5 stainless steel grab bars, a 23.5" x 14.5" shower bench and a curtain rod.

To meet ADA guidelines, a pressure balancing mixing valve, hand held shower with slide bar, vacuum breaker and 60" hose must be installed as per code. These accessories can also ship with the unit.

Standard ADA Codes:
ICC/ANSI A117.1, HUD/ADA, UFAS and TAS.

Standard Codes:
ANSI Z124.1, ASTM F463, ASTM E84, SBCCI, NAHB and UPC.

Shown with ADA accessory package

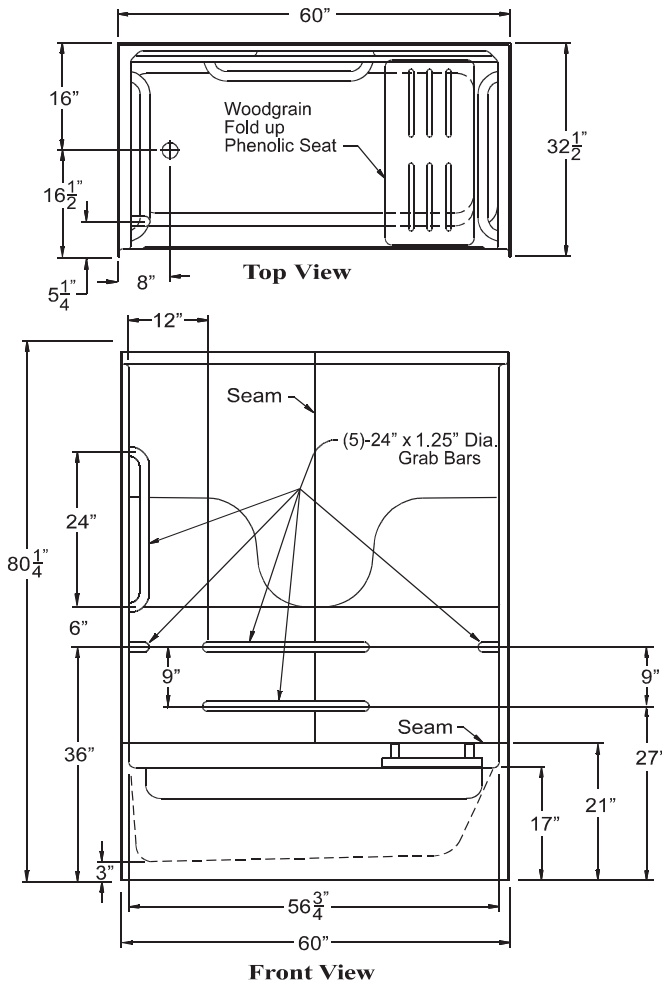


ACCESSIBILITY PROFESSIONALS

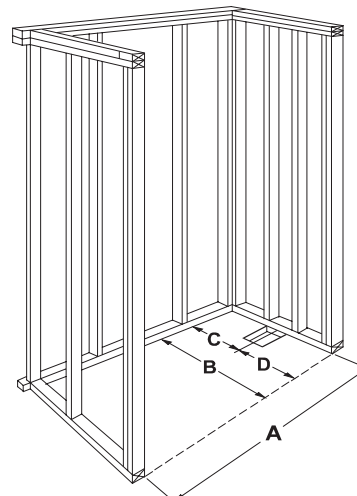
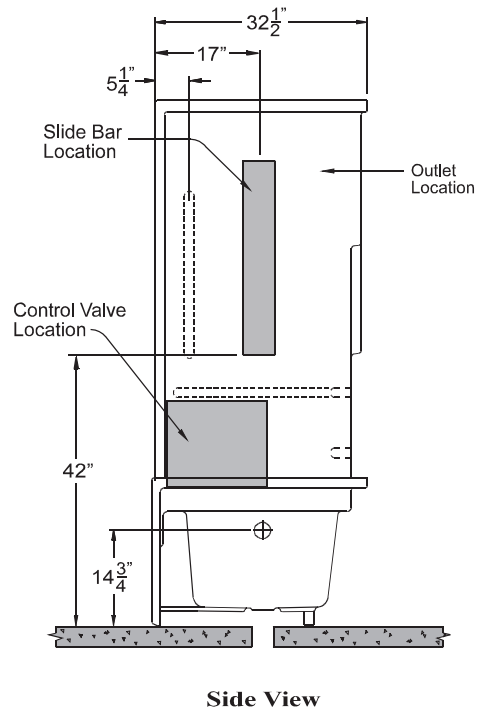
ADA Tub Showers

APTG3260TSADA3P

Handed by the valve wall



NOTE: Due to the nature of the materials, dimension may vary + - 1/2".



FRAMING DIMENSIONS

| A | B | C | D |
|---------|---------|-----|---------|
| 60 1/4" | 32 1/2" | 16" | 16 1/2" |

6" x 6" minimum opening in floor for drain connection