

Freedom ADA Roll In Shower 63" x 38"



Shown with optional accessories Handed by seat, left seat shown
30 year limited warranty

Shower is ADA compliant when installed with available ADAAG accessories.

Model
APFQ6437BF875
APF6437BF875

63" x 38.5" x 80.875"
ID: 60" x 36"

7/8" barrier free threshold
with pre-leveled and
reinforced shower base for
easy installation

One piece for new
construction

3 molded soap ledges

Durable, luxurious and easy
to clean applied acrylic with
tile pattern

Fully reinforced walls offer
strength and easy installation
of accessories

ADA compliant accessories
available: grab bars, folding
shower seat, collapsible water
retainer, weighted shower
curtain and rod, slide bar with
handheld shower, pressure
balance valve, caulkless drain

FREEOM SHOWERS

MODEL: APFQ6437BF875, APF6437BF875

Submittal Data

Product Features

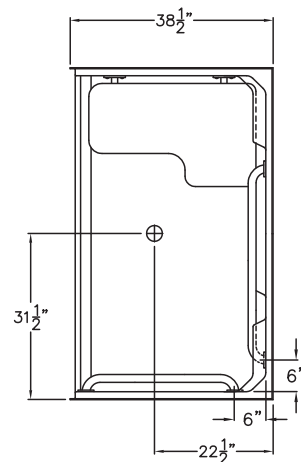
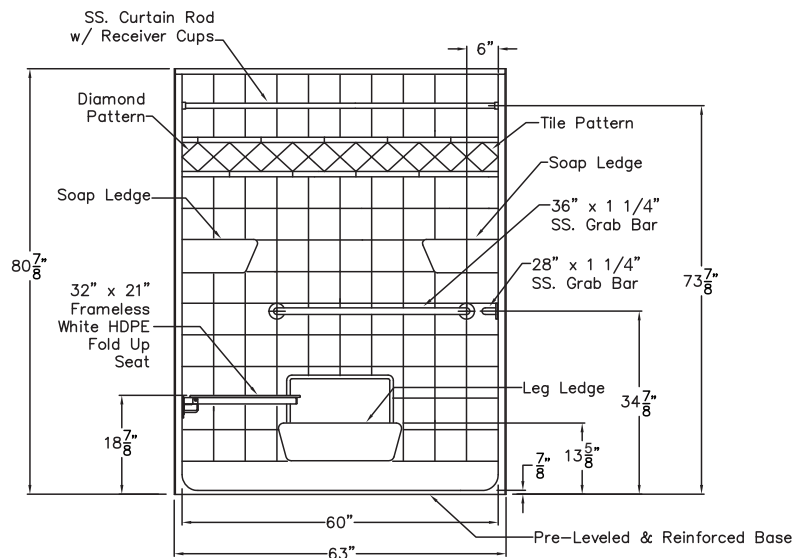
- 63" x 38.5" x 80.875"
- 7/8" barrier free threshold
- Self-supporting and pre-leveled shower base eliminates mud setting
- Fully reinforced walls
- Tile pattern easy to clean applied acrylic
- 3 molded soap ledges
- Textured slip-resistant floor
- Center drain location
- 30 year limited warranty

Code Compliance

- IPC International Plumbing Code
- UPC Uniform Plumbing Code
- ANSI Z124.2 Standards for Plastic Showers
- ADA Accessibility Guidelines for Buildings and Facilities
- ANSI A117.1 Accessible and Useable Buildings and Facilities
- MAS
- CSA

Optional Accessories

- Collapsible Water Retainer
- Folding Shower Seat
- Caulkless Drain
- Grab Bars
- Shower Rod and Curtain
- Pressure Balance Valve with hand-held Shower and Slide Bar

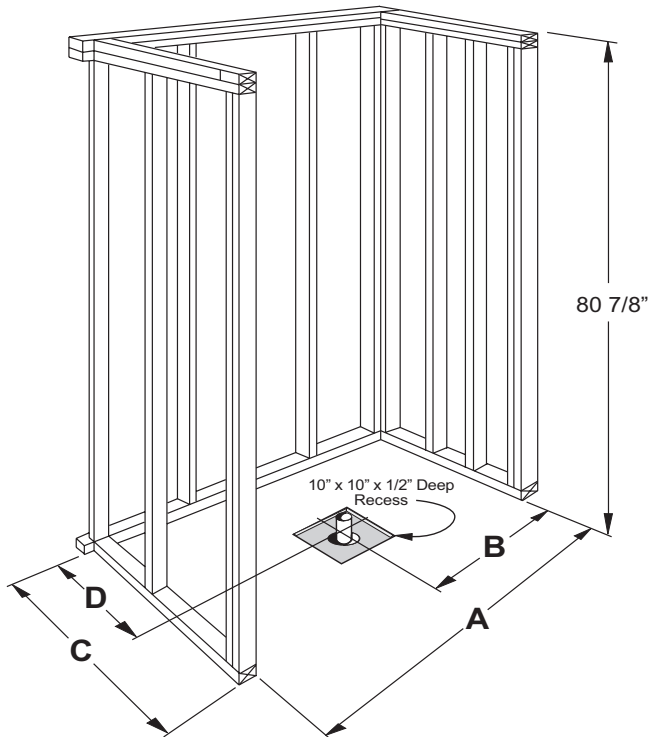


Handed by seat, left seat shown
With optional ADA accessories

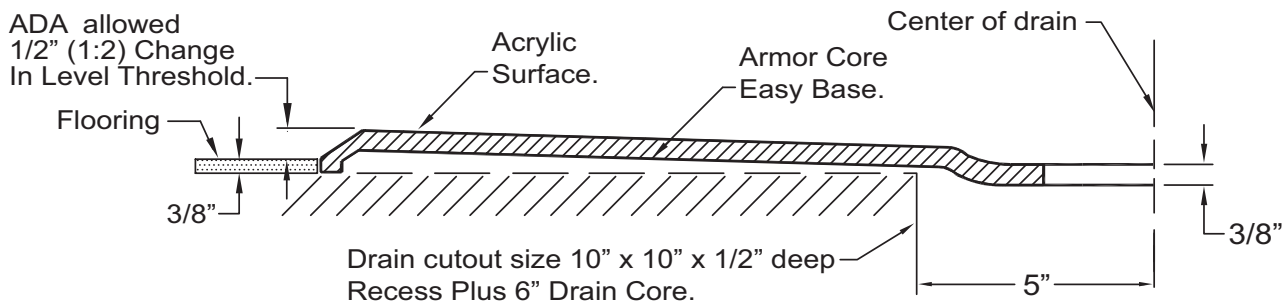


MODEL: APFQ6437BF875, APF6437BF875

Submittal Data - Installation



	A	B	C	D
APF6437	63 1/4"	31 5/8"	38 1/2"	22 1/2"



Detail Of Threshold