

## Freedom ADA Roll In Shower 63" x 38"



Shown with optional accessories  
30 year limited warranty

Handed by seat, left seat shown

Shower is ADA compliant when installed with available ADAAG accessories.

### Model

APFQ6337BF875

APF6337BF875

63" x 38 1/2" x 80 7/8"

ID: 60" x 36"

7/8" barrier free threshold  
with pre-leveled and  
reinforced shower base  
for easy installation

One piece for new construction

3 molded soap ledges

Durable, luxurious and easy to  
clean applied acrylic with tile  
pattern

Fully reinforced walls offer  
strength and easy installation of  
accessories

### Accessories available:

Grab bars, folding shower  
seat, collapsible water  
retainer, weighted shower  
curtain and rod, slide bar with  
handheld shower,  
pressure balance valve,  
caulkless drain

# FREEOM SHOWERS

## MODEL: APFQ6337BF875, APF6337BF875

### Submittal Data

#### Product Features

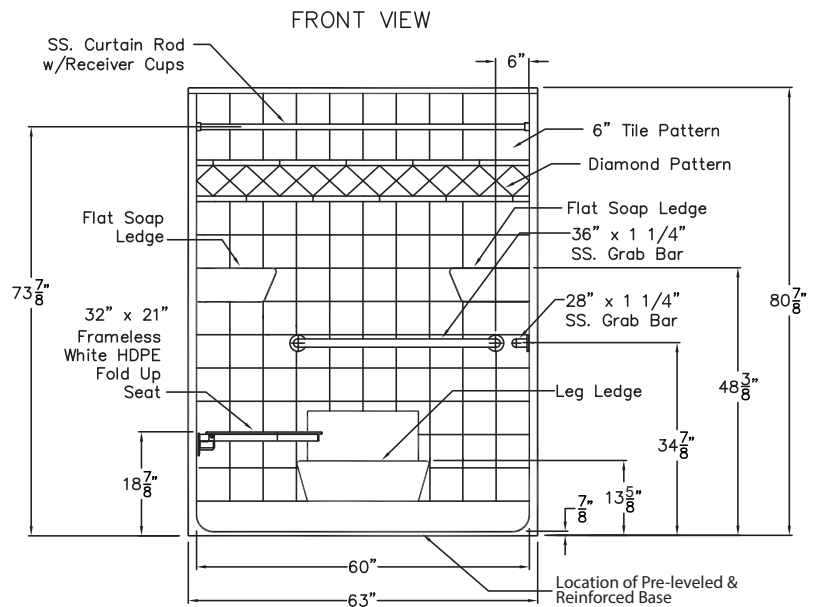
- 63" x 38 1/2" x 80 7/8"
- 7/8" barrier free threshold
- Self-supporting and pre-leveled shower base eliminates mud setting (500 lb capacity)
- Fully reinforced walls
- Tile pattern easy to clean applied acrylic
- 3 molded soap ledges
- Textured slip-resistant floor
- Center drain location
- 30 year limited warranty

#### Code Compliance

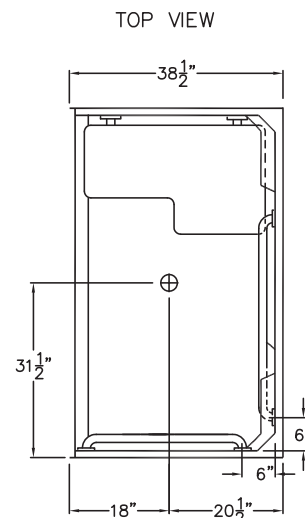
- IPC International Plumbing Code
- UPC Uniform Plumbing Code
- ANSI Z124.2 Standards for Plastic Showers
- ADA Accessibility Guidelines for Buildings and Facilities
- ANSI A117.1 Accessible and Useable Buildings and Facilities
- TAS
- MAS
- CSA

#### Optional Accessories

- Collapsible Water Retainer
- Folding Shower Seat (350lb capacity)
- Caulkless Drain
- Grab Bars
- Shower Rod and Curtain
- Pressure Balance Valve with hand-held Shower and Slide Bar

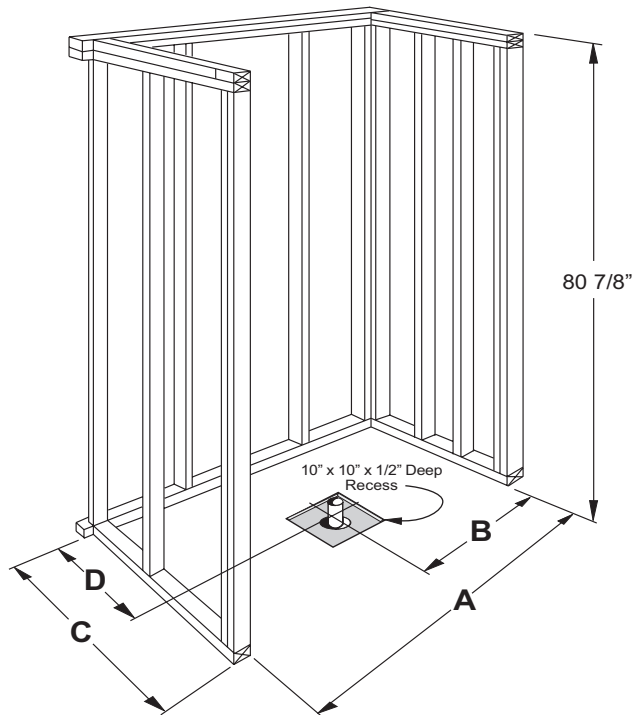


Handed by seat, left seat shown  
With optional ADA accessories



# FREEOM SHOWERS

## MODEL: APFQ6337BF875, APF6337BF875 Submittal Data - Installation



	A	B	C	D
<b>APF6337</b>	63 1/4"	31 1/2"	38 1/2"	20 1/2"

