

Freedom ADA Roll In Shower 63" x 34"

Model
APFQ6333BF875
APF6333BF875

63" x 34" x 78.875"
ID: 60" x 30"

7/8" barrier free threshold
with 1/2" change of level,
pre-leveled and reinforced
shower base for easy
installation

One piece for new construction

3 molded soap ledges

Durable, luxurious and easy to
clean applied acrylic with tile
pattern

Fully reinforced walls offer
strength and easy installation
of accessories

Accessories available:
Grab bars, folding shower
seat, collapsible water
retainer, weighted shower
curtain and rod, slide bar with
handheld shower, pressure
balance valve, caulkless drain

Shown with optional accessories
30 year limited warranty

Handed by seat, left seat shown

Shower is ADA compliant when installed with
available ADAAG accessories.

FREEOM SHOWERS

MODEL: APFQ6333BF875, APF6333BF875

Submittal Data

Product Features

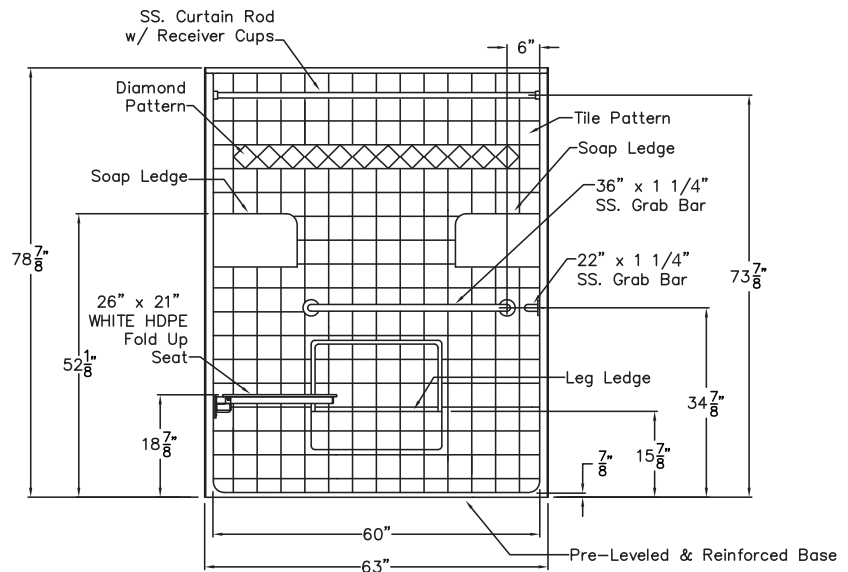
- 63" x 34" x 78.875"
- 7/8" barrier free threshold
- Self-supporting and pre-leveled shower base eliminates mud setting
- Fully reinforced walls
- Tile pattern easy to clean applied acrylic
- 3 molded soap ledges
- Textured slip-resistant floor
- Center drain location
- 30 year manufacturer limited warranty

Code Compliance

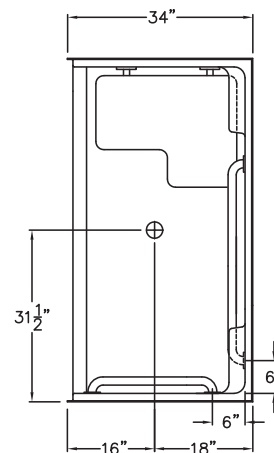
- IPC International Plumbing Code
- UPC Uniform Plumbing Code
- ANSI Z124.2 Standards for Plastic Showers
- ADA Accessibility Guidelines for Buildings and Facilities
- ANSI A117.1 Accessible and Useable Buildings and Facilities
- Not TAS compliant, in Texas and North Carolina order APF6334BF75
- CSA
- MAS

Optional Accessories

- Collapsible Water Retainer
- Folding Shower Seat
- Caulkless Drain
- Grab Bars
- Shower Rod and Curtain
- Pressure Balance Valve with hand-held Shower and Slide Bar

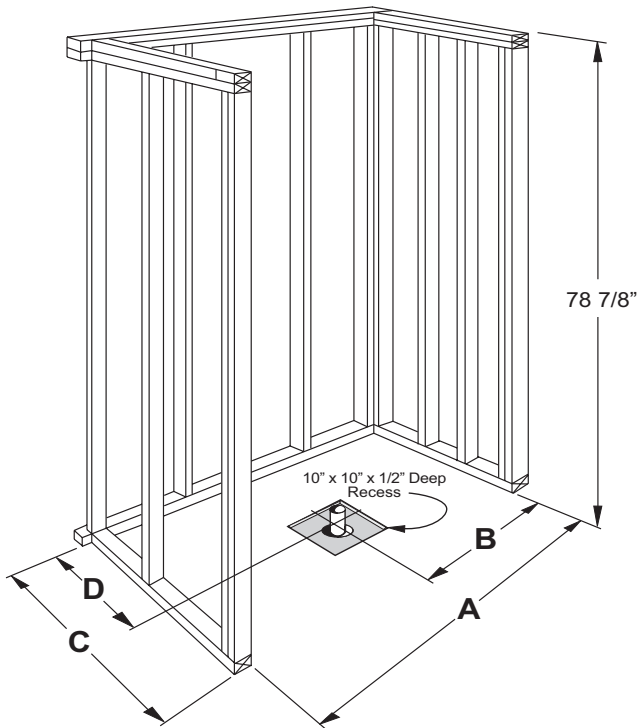


Handed by seat, left seat shown
With optional ADA accessories

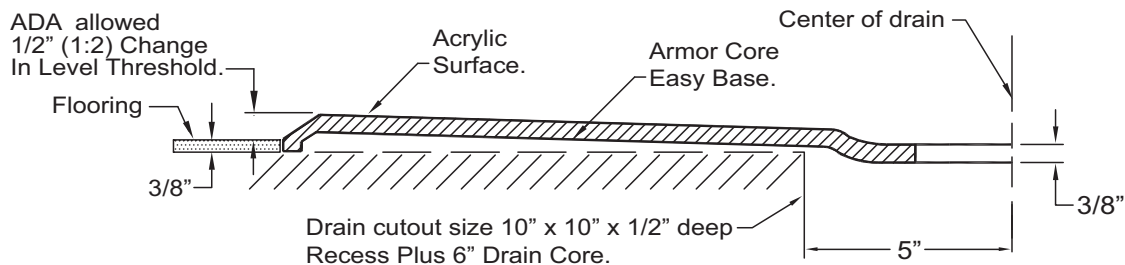


FREEOM SHOWERS

MODEL: APFQ6333BF875, APF6333BF875 Submittal Data - Installation



	A	B	C	D
APF6333	63 1/4"	31 5/8"	34"	18"



Detail Of Threshold