

Freedom ADA Roll-In Shower 62" x 33"



Shown with optional accessories
30 year limited warranty

Handed by seat, right seat shown

Shower is ADA compliant when installed with available ADAAG accessories.

Model

APFQ6233BFF875

APF6233BFF875

62" x 32.75" x 78.625"

ID: 60" x 30"

One Piece Shower

7/8" barrier free threshold
with pre-leveled and reinforced
shower base for easy
installation

Textured Floor

Durable, luxurious and easy to
clean applied acrylic

Fully reinforced walls offer
strength and easy installation
of accessories

Accessories available:
Grab bars, folding shower
seat, collapsible water
retainer, weighted shower
curtain and rod, slide bar with
handheld shower, pressure
balance valve, caulkless drain



MODEL: APF6233BFF875, APFQ6233BFF875

Freedom Roll-In Shower

Submittal Data

Product Features

- 62" x 32.75" x 78.625"
- One piece shower
- 7/8" barrier free threshold
- Self-supporting and pre-leveled shower base eliminates mud setting
- Fully reinforced walls
- Smooth wall easy to clean applied acrylic
- Textured slip-resistant floor
- Center drain location
- 30 year limited warranty

Code Compliance

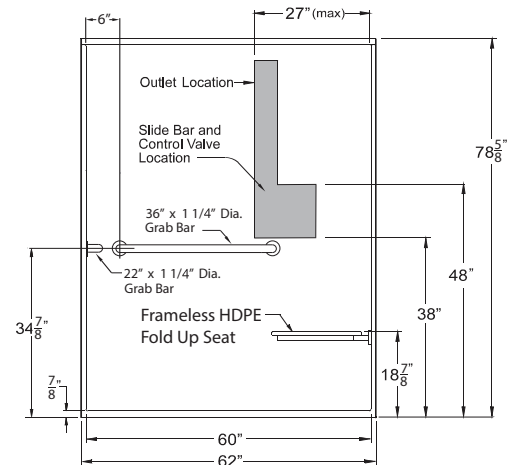
- ADAAG
- ADA
- ANSI/MN

Optional Accessories (factory installed)

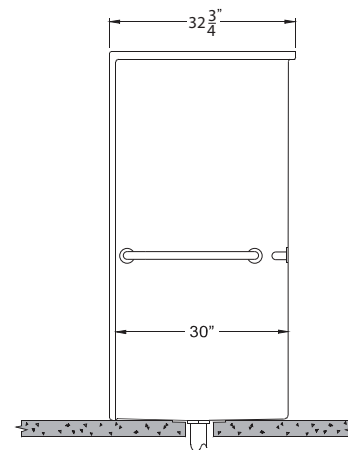
- Grab bars
- Folding shower bench
- Curtain rod
- Slide bar with hand held shower and valve

Optional Accessories (Installed at job site)

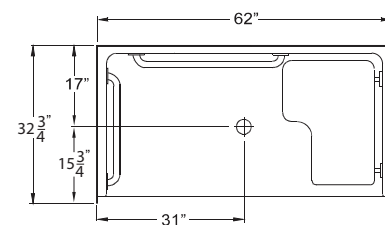
- Collapsible Water Retainer
- Drain
- Shower Curtain



Front View



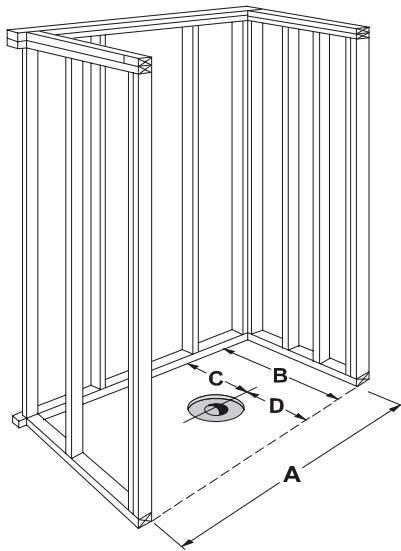
Side View



Top View

FREEOM SHOWERS

MODEL: APF6233BFF875, APFQ6233BFF875 Freedom Roll-In Shower Submittal Data - Installation



FRAMING DIMENSIONS

A	B	C	D
62 $\frac{1}{4}$ "	32 $\frac{3}{4}$ "	17"	15 $\frac{3}{4}$ "

10" Diameter x 1/2" Deep
Recess Around Drain Core

DETAIL OF DRAIN CORE AREA

4" To 6" Diameter Drain Core
Through Slab.

10" Diameter x 1/2" Deep
Recess Around Core

