



Freedom ADA Transfer Shower 38" x 38"



Model

APF3838BF1PRRF
APFQ3838BF1PRRF

38.5" x 37.125" x 78.875"
ID 36" x 36"

1" threshold with pre-leveled and reinforced shower base for easy installation

Dual drywall receiver flange for easy installation

Durable, luxurious and easy to clean applied acrylic with subway tile walls

Fully reinforced walls offer strength and easy installation of accessories

ADA accessories available:
Grab bars, folding shower seat, collapsible water retainer, weighted shower curtain and rod, slide bar with handheld shower, pressure balance valve, caulkless drain

Shown with optional accessories
30 year limited warranty

Handed by the valve

Shower is ADA compliant when installed with available ADAAG accessories.

FREE OM SHOWERS

MODEL: APF3838BF 1P RRF, APFQ3838BF1PRRF

Submittal Data

Product Features

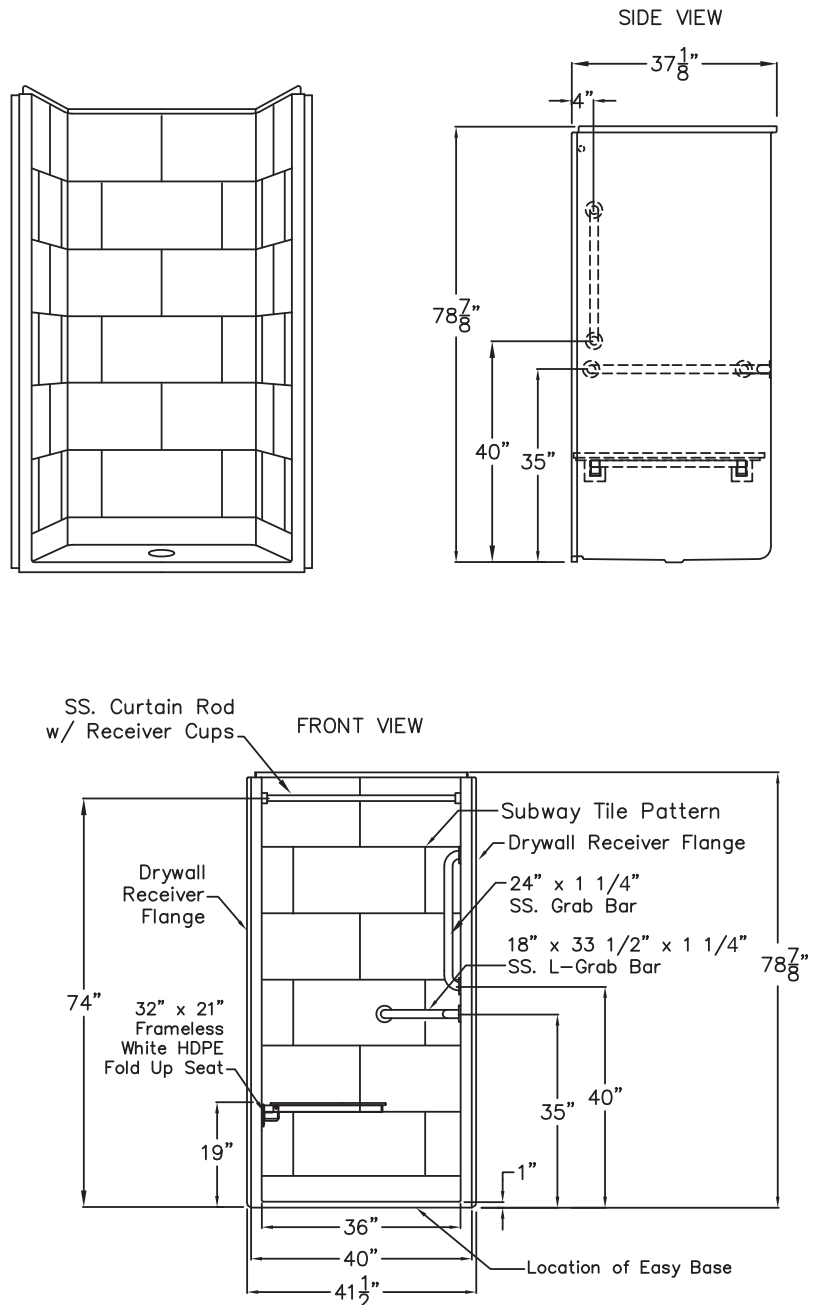
- 38.5" x 37.125" x 79.875"
- 1" barrier free threshold
- Dual drywall receiver flange
- Self-supporting and pre-leveled shower base eliminates mud setting
- Fully reinforced walls
- Easy to clean applied acrylic
- Flat subway tile walls
- Textured slip-resistant floor
- Center drain location
- 30 year manufacturer limited warranty

Code Compliance

- IPC International Plumbing Code
- UPC Uniform Plumbing Code
- ANSI Z124.2 Standards for Plastic Showers
- ADA Accessibility Guidelines for Buildings and Facilities
- ANSI A117.1 Accessible and Usable Buildings and Facilities
- CSA approved

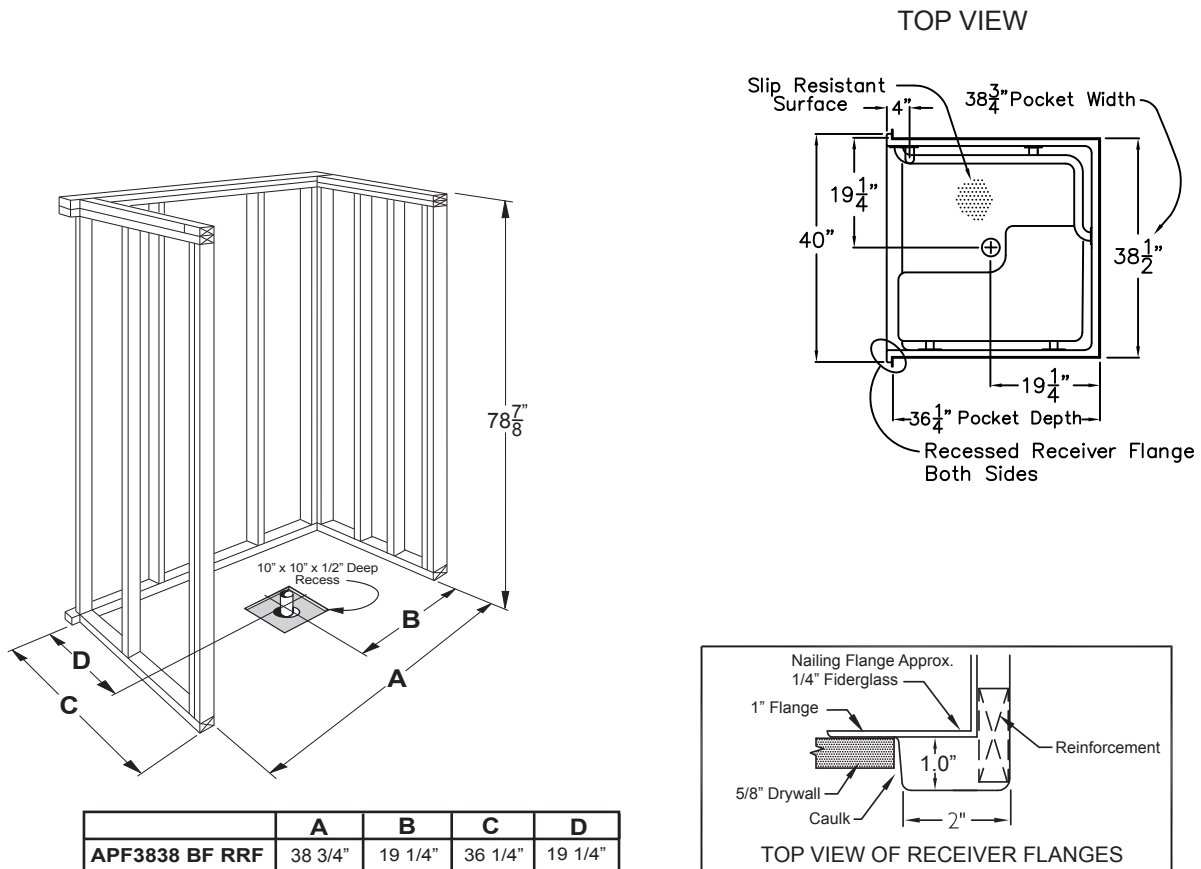
Optional Accessories

- Collapsible Water Retainer
- Folding Shower Seat
- Caulkless Drain
- Grab Bars
- Shower Rod and Curtain
- Pressure Balance Valve with hand-held Shower and Slide Bar

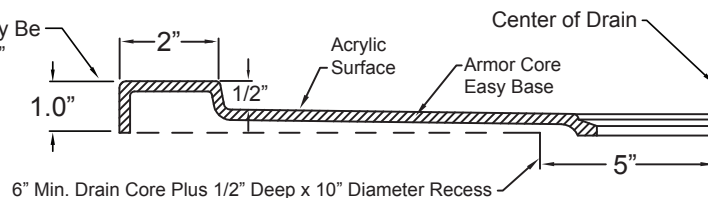


FREEDOM SHOWERS

MODEL: APF3838BF 1P RRF , APFQ3838BF1PRRF Submittal Data - Installation



Coordinate Finished Floor
Height For Code.
Finished Floor May Be
No More Than 1/2"
Below Top Of The
Threshold.



Detail Of Threshold