



BY ACCESSIBILITY PROFESSIONALS

## SPECIFICATION SHEET APTG3260TSADA3PL

Finished surface shall be of a sanitary grade AcrylX™ applied acrylic. The base shall be attached to the sump in such manner to form an integral part with an inner and outer coating of polyester resin. Unit construction shall be of a molded reinforced fiberglass with a 15% minimum fiberglass content.

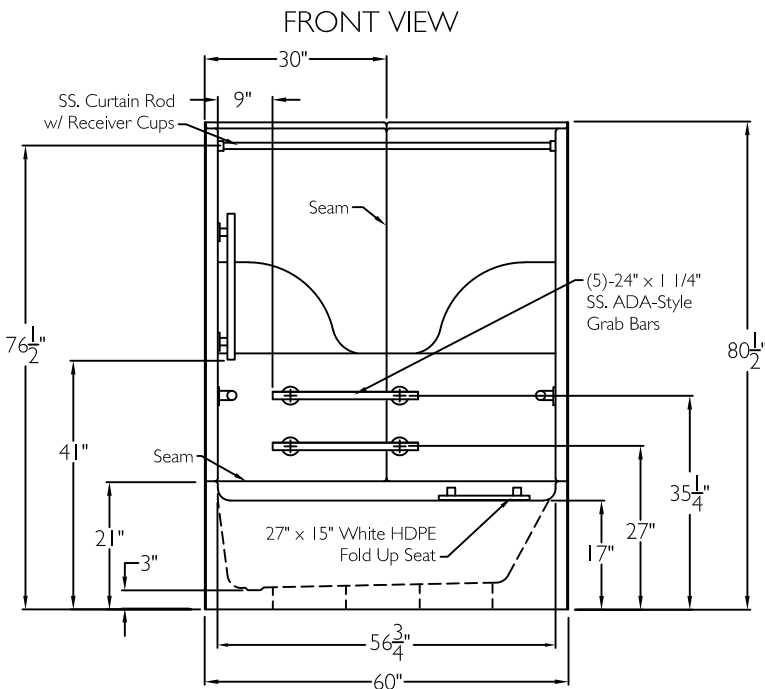
The unit shall have outside dimensions of 60" x 32 1/2" x 80 1/2". The unit shall meet CSA B45.5-11, HUD-UM73, ADA, and ANSI A117.1.

### HANDED BY THE VALVE

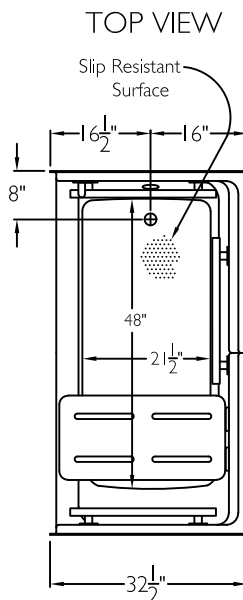
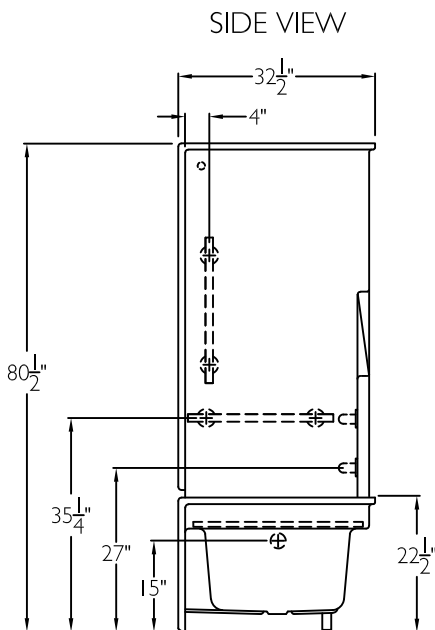
The enclosure may be equipped with the following accessories:  
1) Two 24" x 1 1/4" diameter stainless steel ADA T-style grab bars horizontal on the back wall, 2) Two 24" x 1 1/4" diameter stainless steel ADA T-style grab bars, one horizontal on each side wall, 3) One 24" x 1 1/4" diameter stainless steel ADA T-style grab bar, vertical on the valve wall, all with 1 1/2" statute clearance, secured from the rear with stainless steel bolts, and 3" x 3" x 11 gauge metal mounting plates, 4) 27" x 15" white HDPE fold up seat, 5) One inch diameter stainless steel curtain rod with receiver cups, 6) Three piece sectional design, 7) Molded soap ledges on the back wall.

THIS UNIT FEATURES THE OUTSIDE DIMENSION OF 60" OF OVERALL WIDTH. THIS DOES NOT ALLOW FOR FULL ENCLOSURE OF THE BOLTS AND NUTS USED TO SECURE THE BARS AND SEAT IN PLACE. THE BOLT AND NUT COMBINATION SHOULD NOT PROTRUDE MORE THAN 3/4" ON EITHER SIDE OF THE TUB SHOWER WALLS. THIS MAY REQUIRE THE NEED TO NOTCH STUDS TO ALLOW BOLT CLEARANCE FOR A DRYWALL ENCLOSED FIRE WALL INSTALLATION. ADJUSTMENT OF THE WALL BOARD MAY BE NECESSARY TO PROVIDE CLEARANCE OF THE BOLT(S) WHILE MAINTAINING THE INTEGRITY OF THE DRYWALL ENCLOSED FIRE WALL ENCLOSURE.

NOTE: THIS UNIT WILL NOT ACCEPT A DOOR.



Note: Grab bars on the back wall must be loosened for tub installation.



Job Name	Approved By Print Name	Date	APTG3260TSADA3PL	
Project No	Approved By Signature			
FreedomShowers.com 1-877-947-7769	Architect		Drawing No. XSS 3260 TS 5-SS, ADA T-Style Grab Bars HDPE CR Left	
	Engineer		Date Issued, 3-30-12	Drawing Rev. 3-7-24
	Rep		Material, AcrylX™ Applied Acrylic	
	Wholesaler		Color,	
	Comments		Dimensions are in inches. Due to the nature of the materials dimensions may vary ± 1/2"	