

Freedom ANSI B Shower Pan



Model APF3838SHPANRRF

38" x 38" x 4"

One Piece Shower Pan

Textured Floor

Durable, luxurious and easy to clean applied acrylic

Accessories available:

Grab bars, folding shower seat, weighted shower curtain and rod, slide bar with handheld shower, pressure balance valve, caulkless drain

Submittal Data

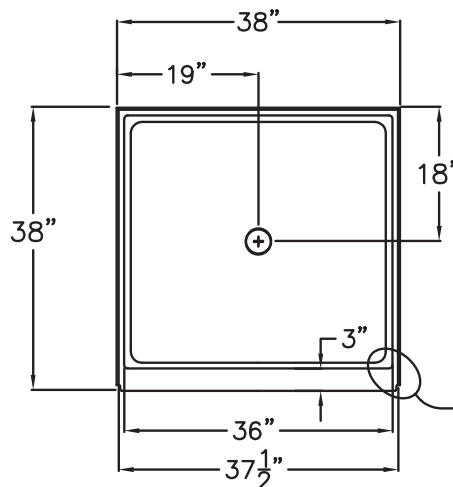
Product Features

- 38" x 38" x 4"
- 4" threshold.
- Self-supporting and pre-leveled shower base eliminates mud setting.
- Easy to clean applied acrylic
- Textured slip-resistant floor
- Center drain location

Code Compliance

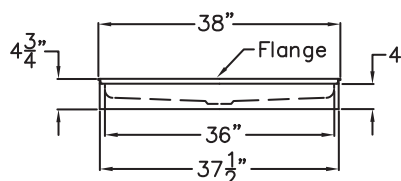
- IPC International Plumbing Code
- UPC Uniform Plumbing Code
- ANSI Z124.2 Standards for Plastic Showers
- ICC/ANSI 117.1 BOCA, NAHBUPC
- SOUTHERN BUILDING CODE

TOP VIEW

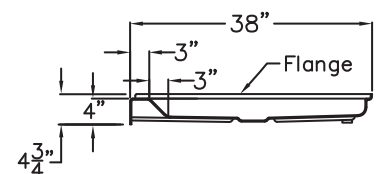


Finished Side At Front Corners (Both Sides)
See Detail Below

FRONT VIEW

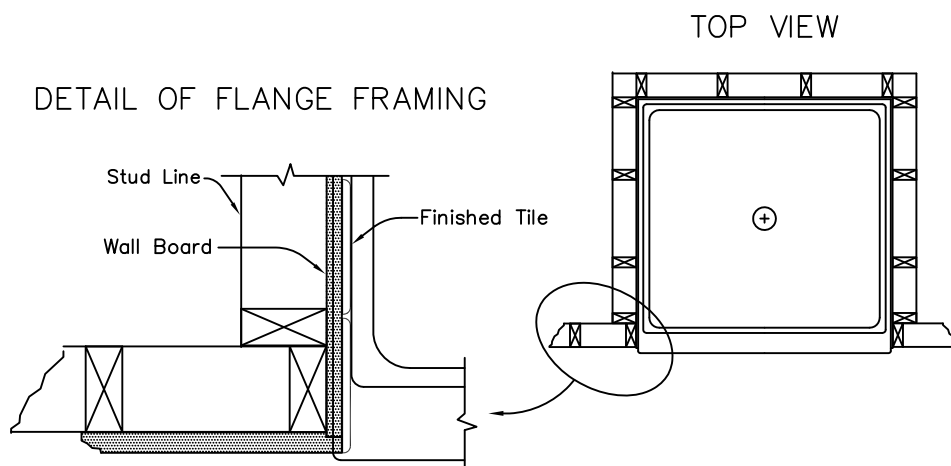


SIDE VIEW



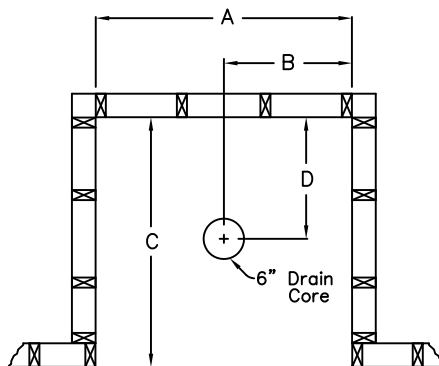
FRAMING DETAILS

APF 3838 ANSI Type B – FHA Spec B Pan.



Framing Dimensions With Receiver Flange

Refer to framing diagrams and dimensional matrix below for proper framing enclosure size.



FRAMING WITH RECESSED FLANGES

A	B	C	D
38 1/4"	19 1/8"	38"	18"