

Freedom Contractor Shower Bar Package

Tubing Material: Type 304 (18-8) Stainless Steel

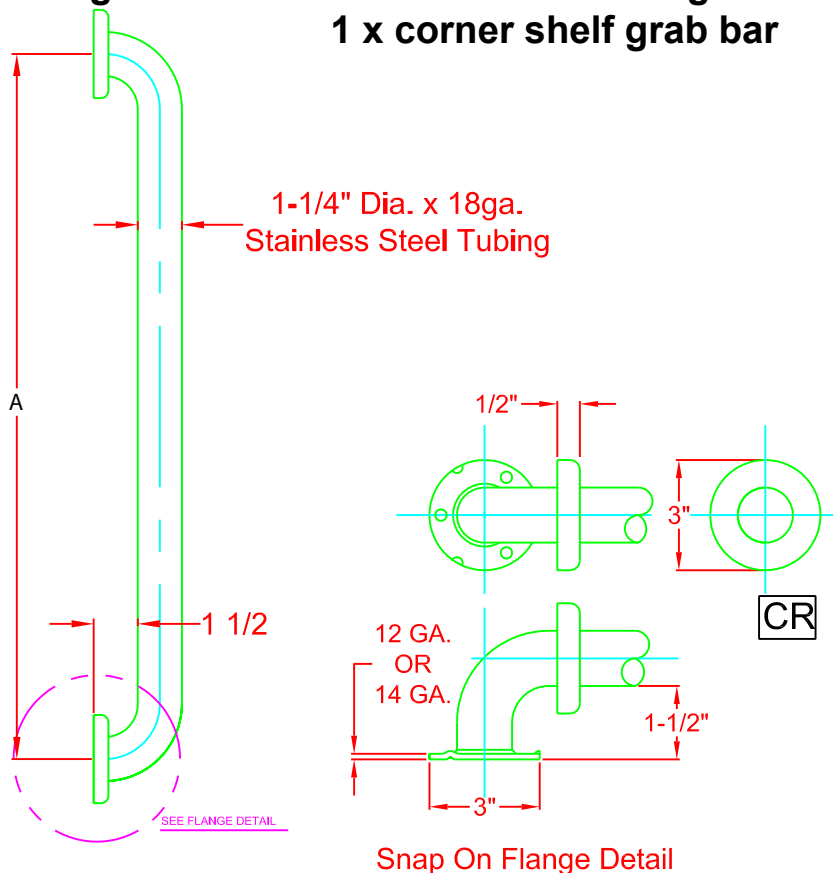
Tubing Size: 1-1/4" (32mm) O.D. x .049" (18ga) (1.2mm) Wall Thickness.

Flange Style: The following mounting flanges are constructed of Type 304 (18-8) Stainless Steel, Heliarc Welded to the bar to form an integral structural unit. 14 ga. (2.0mm) x 3" (76mm) dia. on 1-1/4" bars

Wall Clearance: On straight bars, the standard wall clearance between finished wall surface and the inner bar edge is 1-1/2" (38mm).

All Grab Bars must only be installed using sufficient in-wall backing material.

Package includes : 1 x 24" and 1 x 36" grab bar, 1 x towel grab bar and 1 x corner shelf grab bar



All bars meet Federal specifications WW-P 541/8b, Amendment 1, 16 April, 1990
ANSI 117.1
all FHA, VA & HUD specifications and

**COMPLIES WITH
ADA
REQUIREMENTS**





FreedomShowers.com

1-877-947-7769

Description:

APFGW3930QCRSS

Coronado Newport Grab Bar w/Towel Bar
30" Grab Bar w/Both Ends Straight
(Satin Stainless Finish)

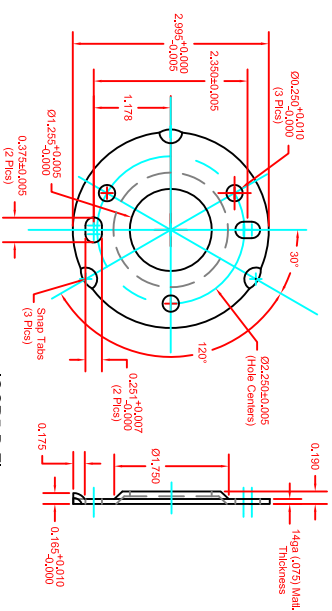
Customer:

Customer Part #

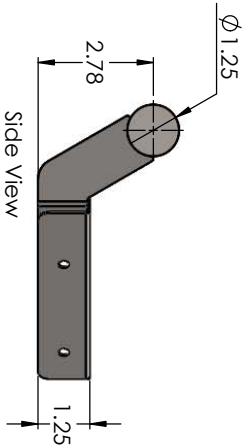
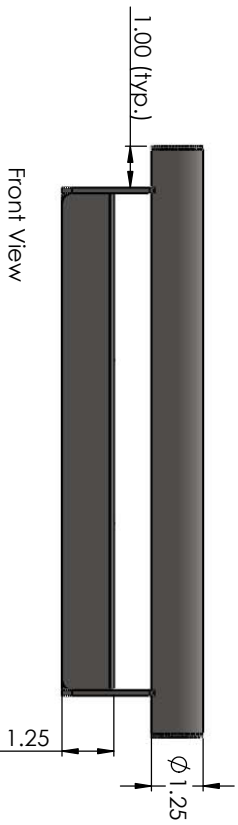
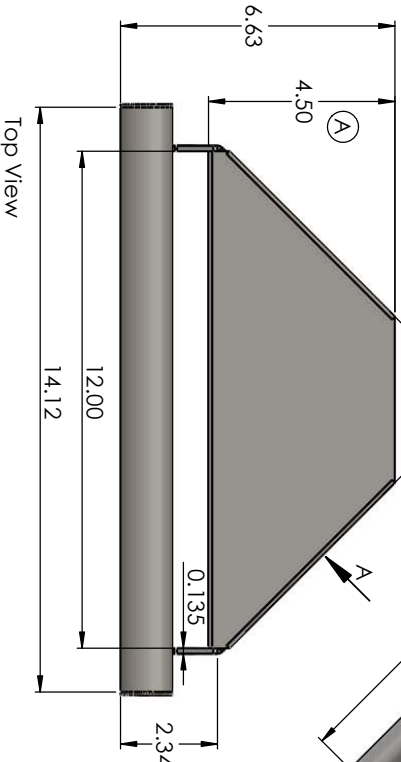
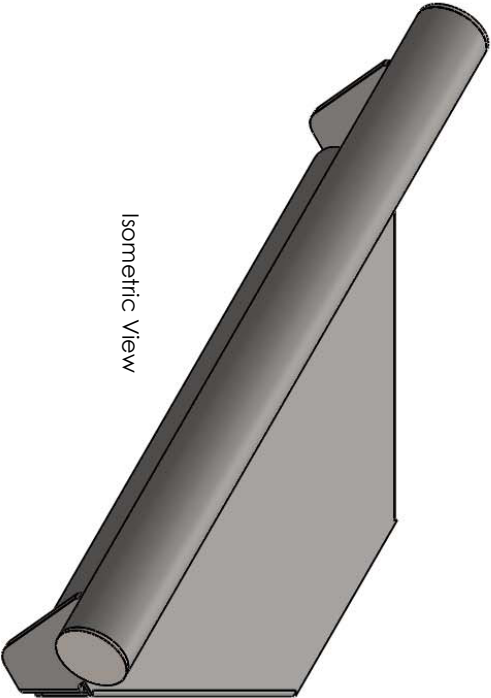
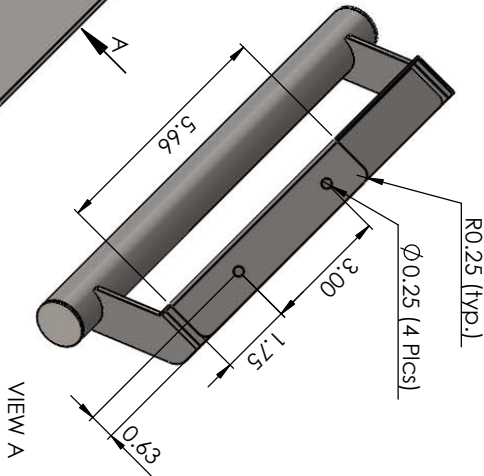
05-21-2012

Material: 1-1/4" Dia. x 18ga. Type 304 S.S.

Finish: Satin Stainless Finish
Flanges: 14ga. Stainless Steel 3" Dia.
Towel Bar: 3/8" Dia. Solid Stainless Rod



IQCR5-B-Flange
Detail



Isometric View

Top View

Front View

Side View

REVISIONS		
REV.	DESCRIPTION	DATE
A	Reduced depth by 1/2" to accommodate 1-1/4" Corner Radius.	02-13-15

UNLESS OTHERWISE SPECIFIED:		
DIMENSIONS ARE IN INCHES	DRAWN	NAME
TOLERANCES:	DATE	03-13-15
FRACTIONAL: 1/8"	CHECKED	
ANGULAR: MATCH 1/2"	ENG. APPR.	
MINIMUM: 1/16"	MFG. APPR.	
THREE PLACE DECIMAL: 1/1000"	Q.A.	
INTERPRET GEOMETRIC TOLERANCING PER:	COMMENTS:	
MATERIAL: 16ga (0.060) Stainless		
FINISH: Satin Stainless		
NEXT ASSY:	USED ON:	
APPLICATION:	DONOT SCALE DRAWING	

TITLE: Corner Shower Shelf
12" Shelf x 4-1/2"
w/ 14" Handle
Satin Stainless

SIZE: DWG. NO. **B** W-SC306-1406-SS_a

SCALE: 1:5 WEIGHT: SHEET 1 OF 1