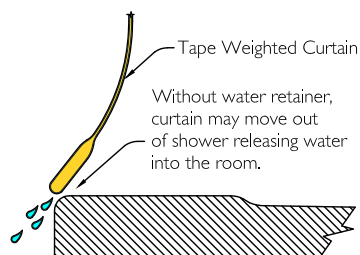


## Collapsible Dam Installation Instructions

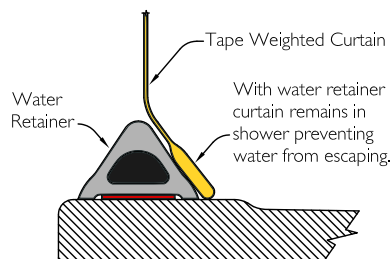
Tools you might need for proper installation

- Utility knife
- Tape measure
- Straight edge
- Clear or white silicone adhesive caulk
- Masking tape
- Rubbing alcohol
- Bucket of water
- Clean rags

**Note:** Before beginning, stretch out the dam allowing it to acclimate to room temperature. Warming the dam will smooth out the kinks and compressions, allowing for a better installation.



Without Collapsible Water Retainer

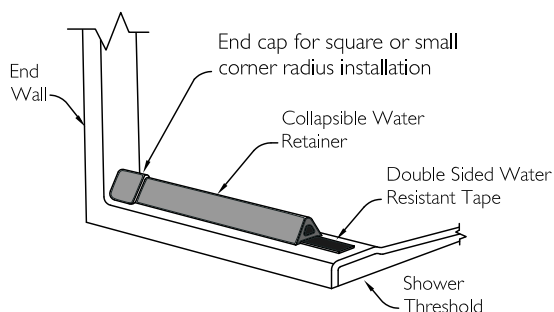


With Collapsible Water Retainer

A properly sized curtain with heavy tape weights combined with a water retainer is the most complete and effective system available today.

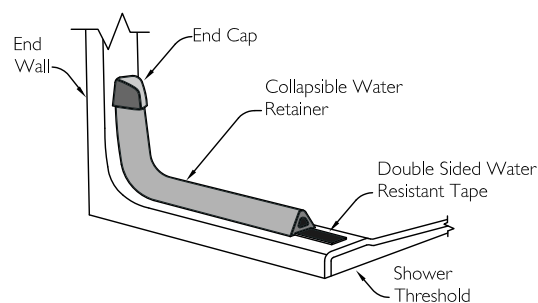
**CAUTION** Certain types of wheel chairs are not compatible with this product. Wheel chairs with plastic wheels may cut or damage the rubber membrane.

### Showers with Square or Small Corner Radius



- Most Freedom Multi-piece showers fall into this category.

### Showers with Large Corner Radius



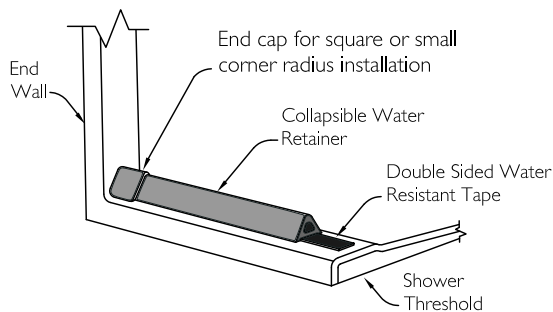
- Most Freedom One-piece showers fall into this category.

**When ordering by phone please specify the type that you have.**

# Collapsible Dam Installation Instructions

## INSTALLATION STEPS WITH SQUARE END CAPS

### Showers with Square or Small Corner Radius



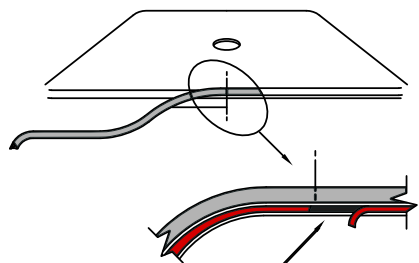
1. Thoroughly clean threshold surface of all soap scum and debris using standard bath cleanser. Chemically clean surface with rubbing alcohol.

2. Dry Fit: measure the required length. Be sure to include inserted end caps in overall measurement.

3. Determine and mark center point of shower.

4. Determine and mark center point of water retainer strip.

5. Turn over water retainer strip and make cut on orange peel off strip at half way mark. Peel off a portion (approx. 4") of the orange peel off strip in one direction exposing the adhesive.



Cut Orange Cover On Tape At Center And Peel Away About 4 Inches To One Side

Align Centerline Of Water Retainer With Shower Centerline. Press And Adhere

Peel, stretch, and align to corner. Repeat on the other side, peel, stretch, align, and press to adhere. Apply end caps.

Caulk as required along edges of end caps to secure and seal.

6. Align strip with pre-determined half way mark.

7. Press on and adhere approximately 4" of strip.

8. Pull and stretch to wall and align before removing remainder of orange peel off strip.

9. Press into place.

10. Peel, stretch, align and pull remaining half to wall. Press into place.

11. Dry fit end caps to insure proper fit. (Trim length if required after stretching & adhering dam)

12. Once proper fit is verified, prepare to apply silicone adhesive caulking.

13. Apply quality silicone adhesive caulking to floor, side wall and male insert end of cap. Push in the male end of your end cap into the water retainer.

14. Wipe clean with rubbing alcohol.

15. Allow 12 hours until adhesive cures before use.

16. Tile Application Grout Line joints: The grout joints or entire outer edge beneath the retainer must be caulked to prevent soap and shower debris from lodging beneath the retainer. The adhesive tape does not extend to the edge (by design) to allow the retainer to absorb the impact energy of a rolling shower chair in high use applications. Wipe off excess caulk and let cure (according to caulk specifications) prior to shower use.

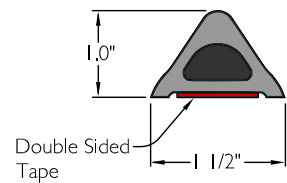
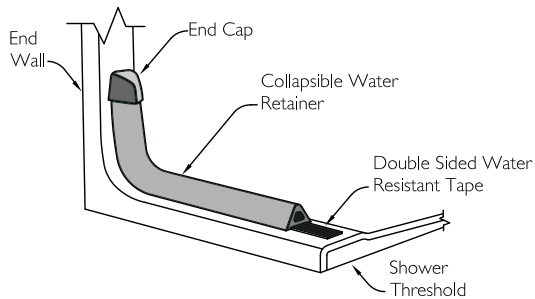
### Note

The installation of end caps is highly recommended for proper fit and finish at corners. The caps will provide proper fit and finish to where the dam meets the side walls. Finished caps also prevent water from being trapped in the dam itself or exiting the shower area insuring a lasting easy to maintain water seal. A properly sized curtain with heavy tape weights combined with a water retainer is the most complete and effective system available today.

# Collapsible Dam Installation Instructions

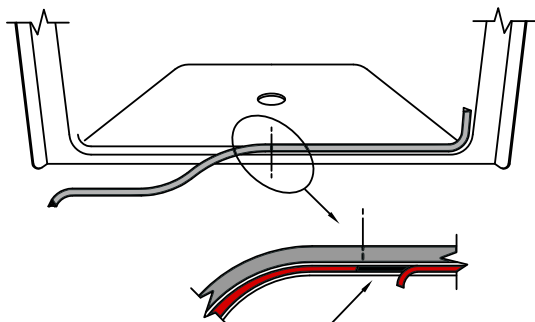
## INSTALLATION STEPS WITH ROUND END CAPS

### Showers with Large Corner Radius



Cross Section

1. Thoroughly clean threshold surface of all soap scum and debris using standard bath cleanser. Chemically clean surface with rubbing alcohol.
2. Verify the required length anticipating the vertical rise, making certain there is enough retainer strip to make a vertical rise on the end walls.
3. Determine and mark center point of shower.
4. Determine and mark center point of water retainer strip.
5. Turn over water retainer strip and make cut on orange peel off strip at half way mark. Peel off a portion (approx. 4") of the orange peel off strip in one direction exposing the adhesive.
6. Align strip with pre-determined pencil mark or molded ridge crown of shower unit starting at the half way mark. Press on and adhere approximately 4" of strip. Pull and stretch to wall and align before removing remainder of orange peel off strip. Press into place.
7. Peel, stretch, align and pull remaining half to wall. Press into place.
8. Push in the male end of your end cap into the water retainer. Adhere end cap to unit with adhesive caulk and wipe clean. White or clear adhesive type caulk is recommended.
9. Use masking tape to temporarily hold cap in place until adhesive cures.
10. Optional: The outer edges beneath the retainer may be caulked if desired to prevent soap and shower debris from lodging beneath the retainer. The adhesive tape does not extend to the edge (by design) to allow the retainer to absorb the impact energy of a rolling shower chair in high use applications. Wipe off excess caulk and let cure (according to caulk specifications) prior to shower use.



Cut Orange Cover On Tape At Center And Peel Away About 4 Inches To One Side

Align Centerline Of Water Retainer With Shower Centerline. Press And Adhere

Peel, stretch, and align to corner. Repeat on the other side, peel, stretch, align, and press to adhere. Apply end caps.

Caulk as required along edges of end caps to secure and seal.

**FreedomShowers.com**

**1-877-947-7769**