

# Freedom ANSI B Shower 38 1/2" x 37 1/8"

MODEL: APF3838SHRRF



Made in USA



30-Year Warranty

#### EXTERIOR DIMENSIONS:

38 1/2" x 36 1/4" x 79"

#### INSIDE DIMENSIONS:

36" X 36"

#### FEATURES:

- 1-piece for new construction
- 4" Easy Step threshold
- Center drain location
- Complies with Fair Housing Act requirements
- 2 molded soap ledges
- Fiberglass construction
- Durable, easy-to-clean applied acrylic finish with subway tile pattern
- Textured slip resistant floor
- Dual recessed Receiver Flanges for compliance
- Fully reinforced walls that offers strength and ease of installation for accessories

#### ACCESSORY PACKAGE AVAILABLE:

##### Includes

- Fold-up L shaped shower seat
- Inside Corner and straight grab bars
- Surface mount soap dish

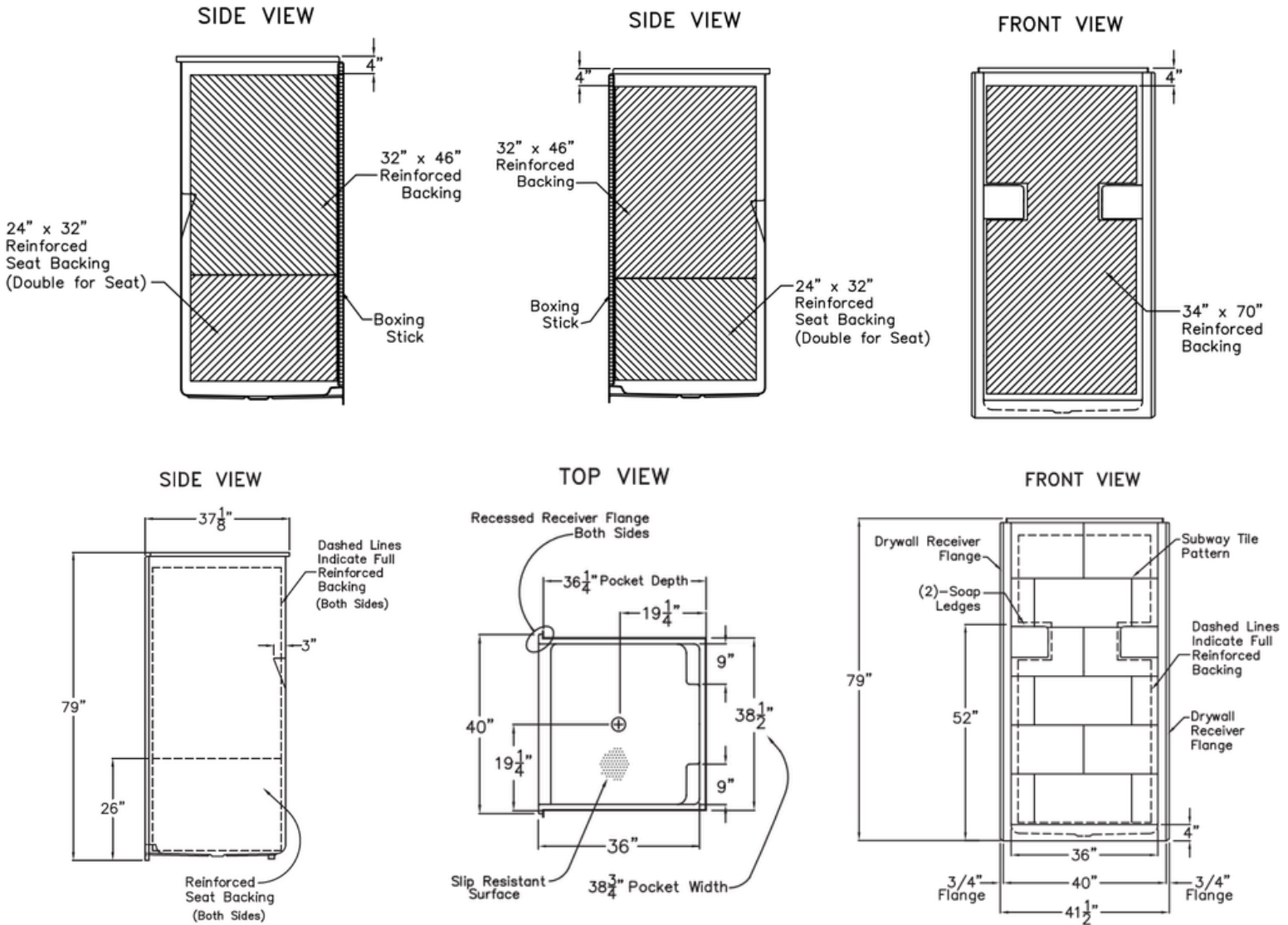
#### INDIVIDUAL ACCESSORIES AVAILABLE:

- Fold-up reversible shower bench
- Grab bars, straight and corner
- Adjustable handheld shower kit with bar
- ADA pressure-balanced shower valve
- Weighted shower curtain and rod
- Drain and chrome strainer

# Freedom ANSI B Shower

## 38 1/2" x 37 1/8"

MODEL: APF3838SHRRF



### NOTES:

Dimensional Tolerance  $\pm 1/2"$ .  
 Accessibility Professionals Inc.  
 assumes no responsibility for prep work

### CODE COMPLIANCE:

- ANSI A117.1 Accessible and Usable Buildings and Facilities
- IPC International Plumbing Code
- UPC Uniform Plumbing Code
- CSA Canadian Standards Association

### FRAME-IN DIMENSIONS:

A	38 3/4"
B	19 3/8"
C	36 1/4"
D	19 1/4"

