

# Freedom ADA Transfer Shower 39" x 37 1/2"

**MODEL: APFQ3682BF75 LR**

**FOR VOLUME ORDERS, REFERENCE MODEL: APF3682BF75 LR**



Made in USA



30-Year Warranty

ADA compliant with correct ADAAG accessory installation

## EXTERIOR DIMENSIONS:

**39" x 37 1/2" x 82 1/8"**

## INSIDE DIMENSIONS:

**36" x 36"**

## FEATURES:

- 3/4" threshold with pre-leveled and reinforced shower base for easy installation
- 1-piece for new construction
- Center drain location
- Handed by valve wall, Left or Right available
- Dual recessed Receiver Flanges for compliance
- Fiberglass construction
- Durable, easy-to-clean applied acrylic with smooth walls
- 2 molded soap ledges
- Fully reinforced walls offer strength and easy installation of accessories

## ADA ACCESSORY PACKAGE AVAILABLE:

Factory-installed package includes

- Fold-up L-shaped shower seat
- 2 x Grab bars, Inside Corner and Straight
- Surface mount soap dish
- Curtain rod
- Drain and chrome strainer

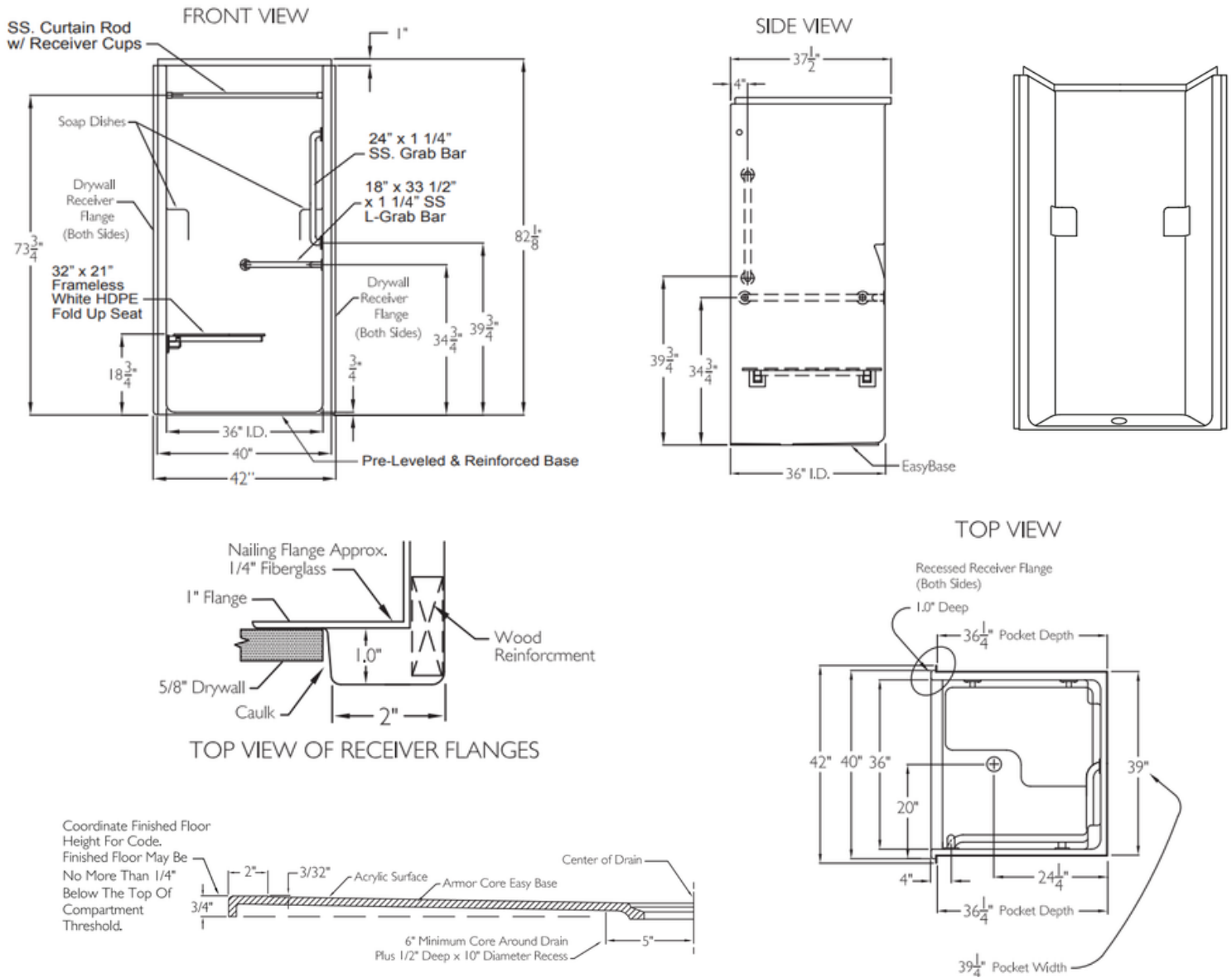
## INDIVIDUAL ACCESSORIES AVAILABLE:

- Grab bars
- L-shaped folding shower seat
- Adjustable handheld shower kit with bar
- ADA pressure-balanced shower valve
- Collapsible water retainer with end caps
- Weighted shower curtain and rod
- Drain and chrome strainer
- Flange trim kit

# Freedom ADA Transfer Shower

## 39" x 37 1/2"

**MODEL: APFQ3682BF75 LR**  
**FOR VOLUME ORDERS, REFERENCE**  
**MODEL: APF3682BF75 LR**



### NOTES:

Dimensional Tolerance  $\pm 1/2"$ .  
 Accessibility Professionals Inc.  
 assumes no responsibility for prep work

### CODE COMPLIANCE:

- ADA Accessibility Guidelines for Buildings and Facilities
- ANSI A117.1 Accessible and Usable Buildings and Facilities
- ANSI Z124.2 Standards for Plastic Showers
- IPC International Plumbing Code
- UPC Uniform Plumbing Code
- CSA Canadian Standards Association

### FRAME-IN DIMENSIONS:

A	39 1/4"
B	19 1/2"
C	36 1/4"
D	24 1/4"

