

ADA Roll-in Shower 60" x 36" Left or Right Seat Wall

MODEL: APTG6239BF875 LR



Made in USA



30-Year Warranty

EXTERIOR DIMENSIONS:

62" W x 39 1/2" D x 78 7/8"H

INTERIOR DIMENSIONS:

60" W x 36" D clear floor space

FEATURES:

- 1-piece for new construction
- 7/8" barrier free threshold with pre-leveled and reinforced shower base for easy installation
- Handed by seat side, left or right (seat available to add)
- Textured Floor
- Fiberglass construction
- Reinforced backing in walls offers strength and easy installation of accessories. Extra on seat side.
- Durable, easy-to-clean applied acrylic with smooth walls
- 2 molded soap ledges
- ADA Compliant when installed with available ADAAG accessories

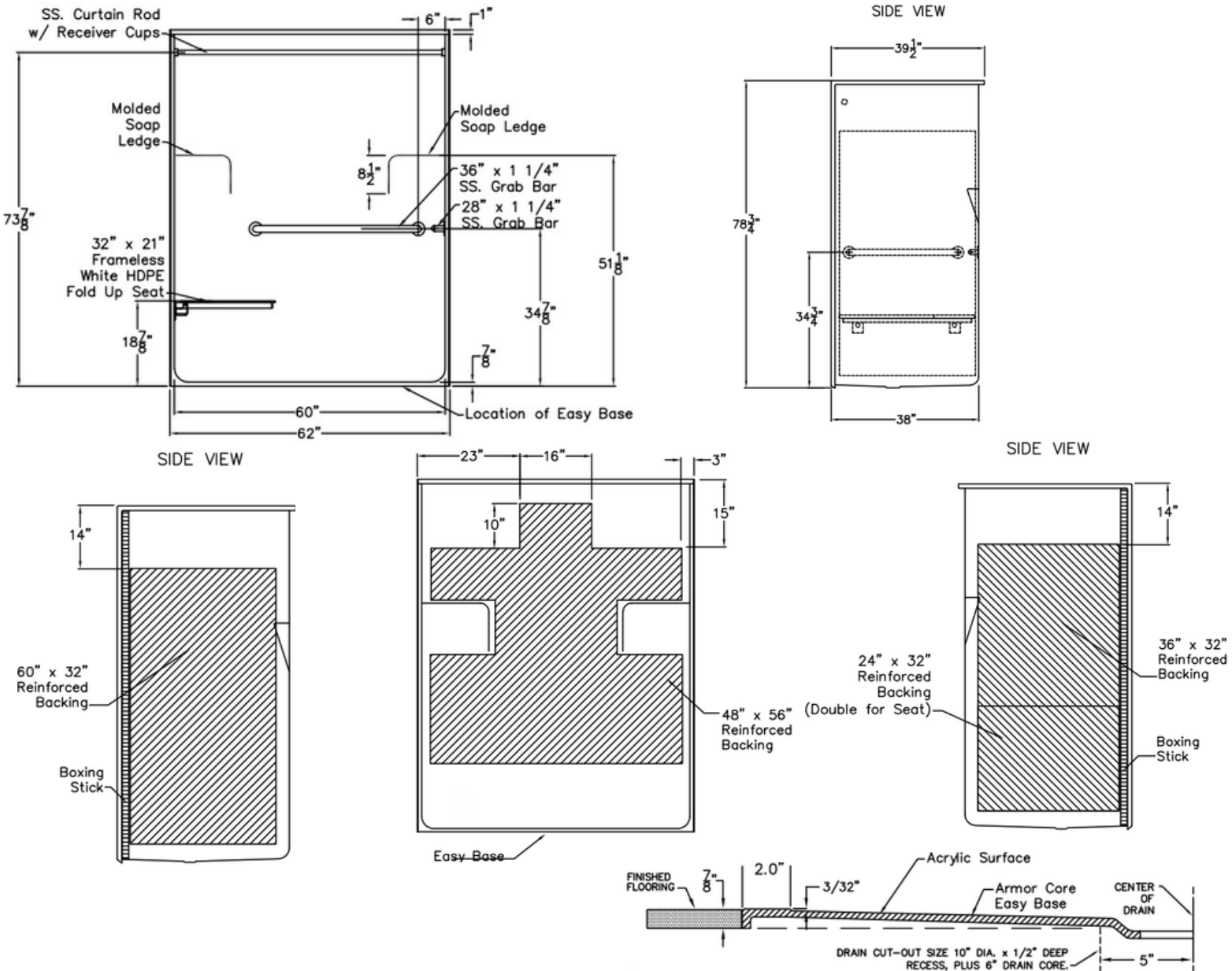
ACCESSORIES AVAILABLE:

- Grab bars
- Frameless white fold-up L-shaped seat
- Adjustable handheld shower kit with bar
- ADA pressure-balanced shower valve
- Collapsible water retainer with end caps
- Weighted shower curtain and rod
- Drain and chrome strainer
- Flange trim kit
- Soap dish
- Additional reinforced backing

ADA Roll-in Shower

60" x 36" Left or Right Seat Wall

MODEL: APTG6239BF875 LR



NOTES:

Dimensional Tolerance $\pm 1/2"$.
 Accessibility Professionals Inc.
 assumes no responsibility for prep work

CODE COMPLIANCE:

- IPC International Plumbing Code
- UPC Uniform Plumbing Code
- ANSI Z124.2 Standards for Plastic Showers
- CSA Canadian Standards Association

FRAME-IN DIMENSIONS:

A	62 1/4"
B	31 1/8"
C	39 1/2"
D	23 1/2"

