

# Freedom Accessible Shower 50" x 50", Center Drain

MODEL: APF5050BF5P



Made in USA



30-Year Warranty

#### EXTERIOR DIMENSIONS:

50 1/2" x 50 1/8" x 77 3/4"

#### INTERIOR DIMENSIONS:

48" x 48 1/8"

#### FEATURES:

- 5-piece for remodeling
- 1" Barrier free threshold with pre-leveled and reinforced shower base for easy installation
- 1 Molded soap/foot ledge
- Fiberglass construction
- Durable, easy-to-clean applied acrylic with 8" tile pattern
- Fully reinforced walls offer strength and easy installation of accessories

#### ACCESSORY PACKAGES AVAILABLE:

##### Residential Safety Package includes:

- Fold-up wall-mounted shower bench
- 3 x Grab bars

##### Water Retention Package includes:

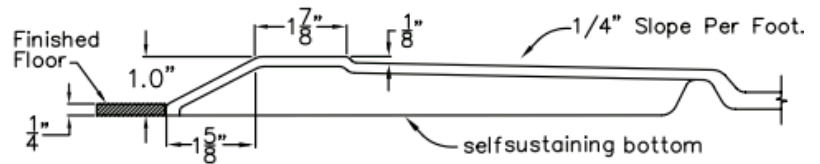
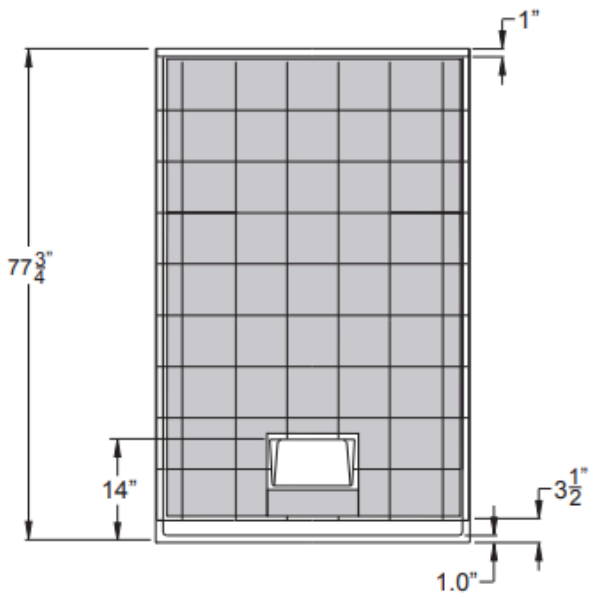
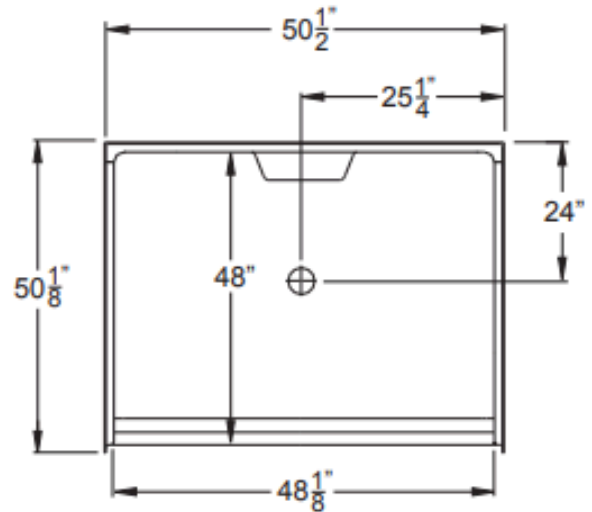
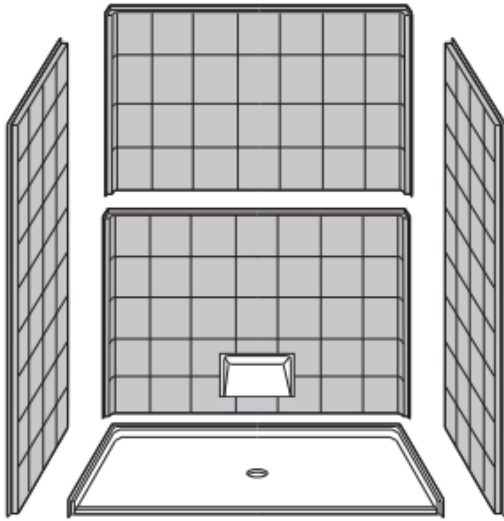
- Collapsible water retainer with end caps
- Weighted shower curtain and rod

#### ACCESSORIES AVAILABLE:

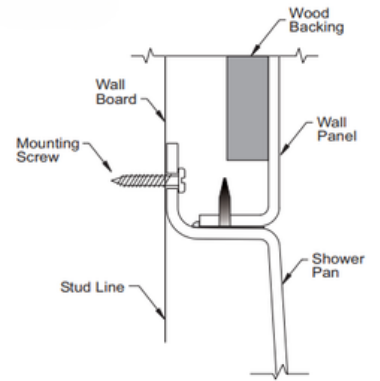
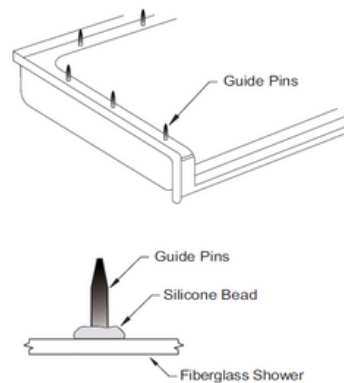
- Fold-up shower bench (various styles)
- Grab bars (various styles and sizes)
- Adjustable handheld shower kit with bar
- ADA pressure-balanced shower valve
- Collapsible water retainer with end caps
- Weighted shower curtain and rod
- Drain and chrome strainer
- Flange trim kit

# Freedom Accessible Shower 50" x 50", Center Drain

MODEL: APF5050BF5P



THRESHOLD VIEW



## NOTES:

Dimensional Tolerance  $\pm 1/2"$ .  
Accessibility Professionals Inc.  
assumes no responsibility for prep work

## CODE COMPLIANCE:

- IPC International Plumbing Code
- UPC Uniform Plumbing Code
- ANSI Z124.2 Standards for Plastic Showers
- CSA Canadian Standards Association
- Veterans Affairs Interior Dimension

## FRAME-IN DIMENSIONS:

A	50 3/4"
B	25 3/8"
C	50 1/8"
D	24"

