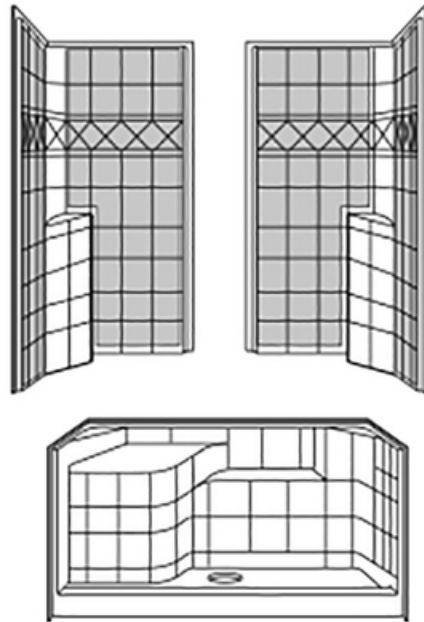




INSTALLATION INSTRUCTIONS

Freedom Easy Step 3-Piece Sectional Shower

APF3648SH3PR



Customer Support: 1.877.947.7769

Email: apsupport@accessibilitypro.com

This installation manual provides written & visual guidance for the installation of an easy step threshold 3-piece shower. For video demonstration of installation see our website.

BEFORE YOU START TIP:

Fast is Slow and Slow is Fast to save time, reduce mistakes and frustration. We do not recommend removing existing bath unit until you have confirmed receiving your shower unit and accessories complete, damage or defect.

RECEIVING YOUR SHOWER

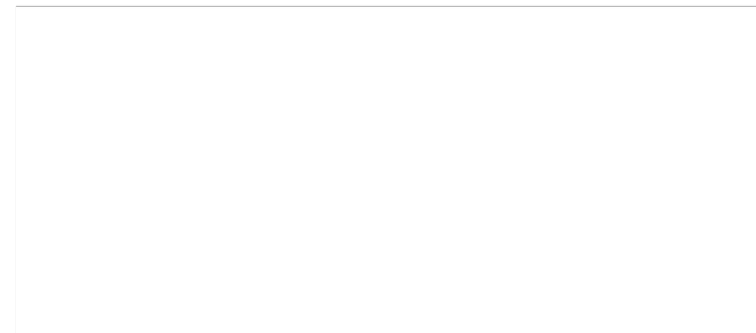
An able-bodied adult must be present during the arrival of your unit to receive, inspect and note on the bill of lading any visual damage to the carton or crate that may have occurred during transit. (see image AP SH 1) Do not allow the driver to leave until this is done, failure to do so may limit or void your claim with the LTL carrier for repair or replacement. (see image AP SH 2) Photograph any suspicion of damage for your records and contact Accessibility Professionals immediately. (see image AP SH 3)

DRY ASSEMBLE YOUR SHOWER

Dry assemble your modular shower prior to moving into the bathroom space. This procedure can be performed on any clean, dry, and open space. (see image AP SH 4) This is an important step for ensuring that:

- You have received the correct panels.
- The panels and pan are free from damage and defect.
- The panels align properly when assembled prior to installing in the framing pocket.
- All ordered accessories have been received.

Any defects, damage or misalignment should be photographed and reported immediately to Accessibility Professionals.



The following is a list of the required tools:

- | | |
|-----------------------------|------------------------------|
| Hammer | Tape Measure |
| 1/8" counter sink drill bit | Hole saw 3.5" - 4" |
| Flat head screw driver | Hole saw 1" - 1-3/8 |
| Utility Knife | Safety Glasses |
| Power Drill | Inside PVC pipe cutting tool |
| Caulking Gun | Plumb Bob |
| Gloves | Grease pencil/marker |
| 4 Foot Level | Power Saw |
| 2 Foot Level | Vise Clamps |
| Plumber Level | Framing square |
| Bucket 5 gal | |



Installation and Finishing Materials by others:

- | | |
|--------------------------------------|-----------------------|
| #8 SS Flat Head Wood Screws | Goof Off Cleaner |
| 1-Tube White Bathroom Caulking | Denatured Alcohol |
| 2-Tubes 100% Clear Silicone Caulking | Shims-Wood Or Plastic |
| Painters Masking Tape | Plumbers Grease |
| Large Wiping Cloths | |



OPTIONAL QUICK CONNECT FITTINGS & TOOLS

- | | | |
|---------------------|-------------------------------|------------------------------|
| Plumbers Grease | 2-1/2" Pex MIPT x Push Elbow | 1-5'length 1/2" Pex Pipe/Red |
| Pex Removal Tool | 2-1/2" Pex Push Couplings | 1-Length 1/2" Pex Pipe/White |
| Pex Pipe Cutter | 1-FIPT x 1/2" Pex Eared Elbow | |
| Pipe Thread Sealant | 1-5'length- 1/2 Pex Pipe/Blue | |

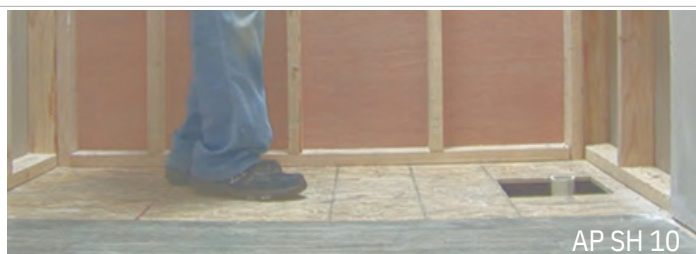
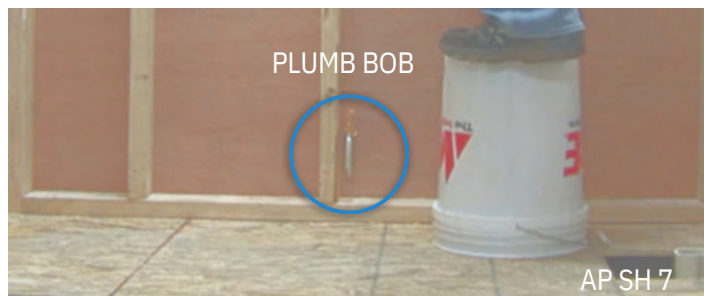


PREPARING THE FRAMING POCKET

Check the framing pocket to ensure it is sized properly with the dimensions provided on the Framing Diagrams page in your installation instructions. (see image AP SH 5) Next, check the pocket for square, plumb and level and make the necessary adjustments. (see image AP SH 6) Note it is more common than not that adjustments will need to be made.

Start by hanging a plumb bob from the framing beginning at the back wall, this is critical to your installation. (see image AP SH 7) In many cases, the wall will not be plumb. A solution is to either shim the pan away from the wall (see image AP SH 8) or notch the stud. (see image AP SH 9) This is critical to a proper installation of the back wall panels. Slight variances will affect plumb walls and uneven grout lines.

Inspect the sub-floor for level and structural integrity. A solid, non-flexing sub-floor is required. Strengthen and replace any weak or damaged sub-floor materials. (see image AP SH 10)

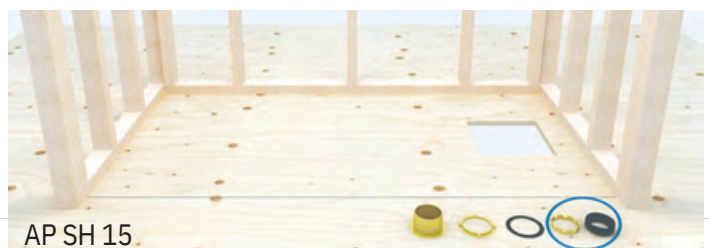
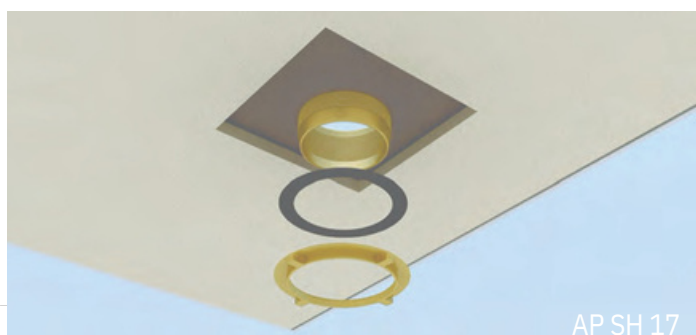
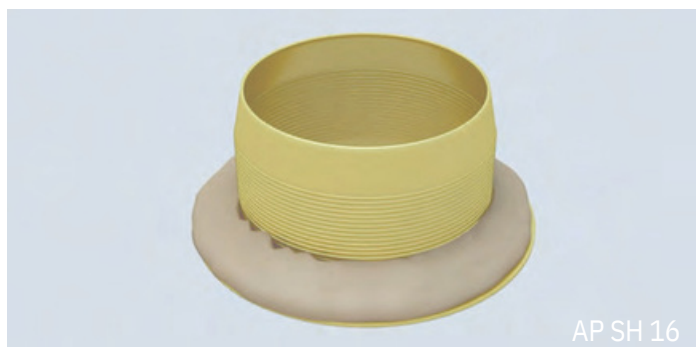
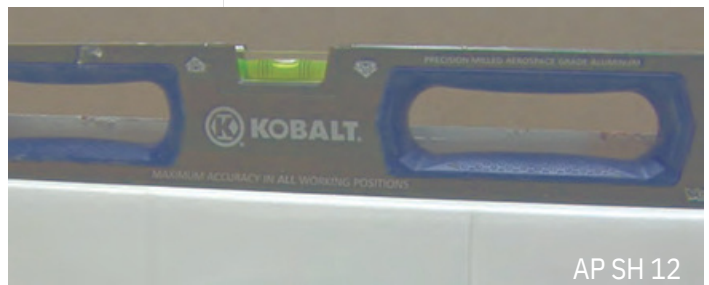


Ensure pocket is clean from all debris. Dry-fit your shower base to ensure it fits in the frame properly and is centered with the drain. Pre-position 3 short lengths of ½” PVC plastic pipe as “slider rails or shoe horns” in the framing pocket. Lower the shower base at a 45 degree angle onto the PVC pipe as shown. (see image AP SH 11) This will assist greatly on sliding the base into the framing pocket. Depending on your room configuration and clearances it may be necessary to cut additional dry wall to provide enough clearance to install the pan. Remember you may need to shim the base out away from the stud to ensure the walls can be installed properly.

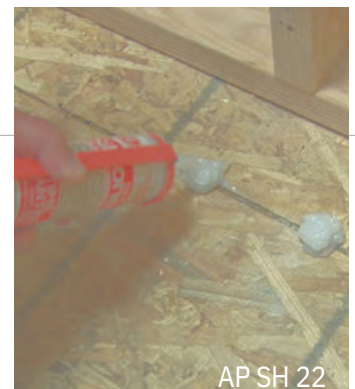
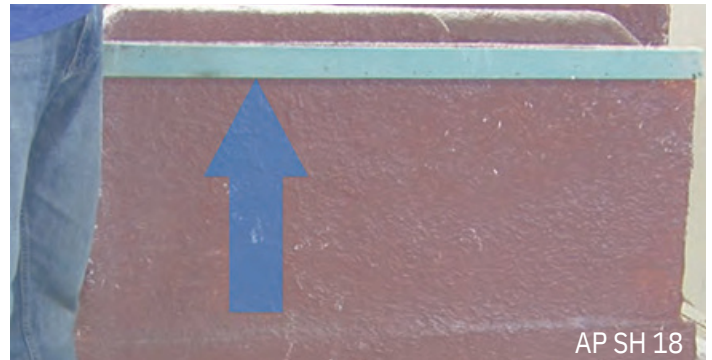
Level the base temporarily (see image AP SH 12), fastening the base to one stud on the center of the back wall with one screw. (see image AP SH 13)

Once level, draw a line on the sub floor indicating the front point of the thresh-old. (see image AP SH 14) This will provide a visual cue for a later step when permanently installing the base. Remove temporary screw and pull the shower base back out of the framing pocket.

Install the Drain fitting on the shower base. Remove the inside neoprene gasket and compression ring and set aside for a later step. (see image AP SH 15) Install the provided commercial 2” no caulk shower drain body on the base using plumber’s putty. (see images AP SH 16 & 17)



SUPPORTING THE BACK LEG: The base is manufactured with a built-in back leg support. (see image AP SH 18) During the dry-fit procedure, you will notice the base does not sit level naturally. The support leg is cut short to provide adjustment for uneven floors. Proper installation requires SOLID contact between the bottom of the support leg and the sub-floor as your warranty depends on it. First, measure the distance from the front apron to the center of the back leg (see image AP SH 19). Now transfer that measurement from the previously marked line on the floor (see image AP SH 20) and using a straight edge mark line on the floor for the back leg. (see image AP SH 21) Next, using approximately 1 tube of 100% clear silicone adhesive, apply every 2” on your line as shown. (see image AP SH 22) The adhesive should be applied at a height that ensures contact with the base as its set in place, which means each bead of silicone should be at least 1 inch or greater. Once the adhesive has cured, this will provide proper support and adhesion between the pan and the sub-floor.



BASE INSTALLATION PROCEDURE

With the base ready to install permanently, use a hammer handle to guide the drain over the drain pipe (see image AP SH 23) and slowly lower the base to level, nudging in small movements until the base meets the line drawn on the floor from an earlier step.

Check for level. (see image AP SH 24)



Re-secure the center screw to the stud wall. *Note: Leaning*

into the shower can easily nudge your base out of level. It is recommended to secure one screw into each wall re-checking level as you go. A level base is critical to wall assembly.

Secure the pan to all available studs shimming where necessary counter sinking #8 stainless steel screws. This allows the screw head to be flush with the finished flange so as to not interfere with the finished wall installation.

DRAIN CONNECT PROCEDURE:

Using plumbers grease, lubricate the inside of the rubber gasket and slide over the drain pipe with beveled edge facing up. (see image AP SH 25) Push down until it seats itself. Then screw compression ring into place until tight. (see image AP SH 26) Cut the drain pipe using an inside pipe cutting tool. (see image AP SH 27)

APPLY FLOOR PROTECTION:

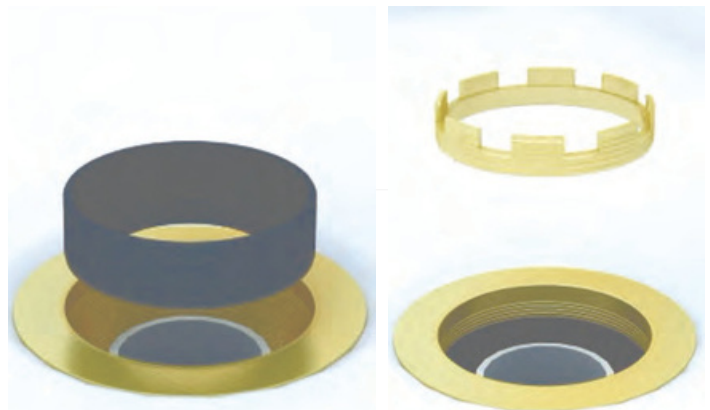
It is recommended that you apply temporary protection for the floor surface. (see image AP SH 28) It is now safe to step in the shower for next steps.

INSTALLING THE WALLS:

Now it is time to install walls. If using the quick connect plumbing method it is best to install the seat side wall first. For sweat valve installations, the protrusion of valve stem in some cases may dictate which wall panel you install first.

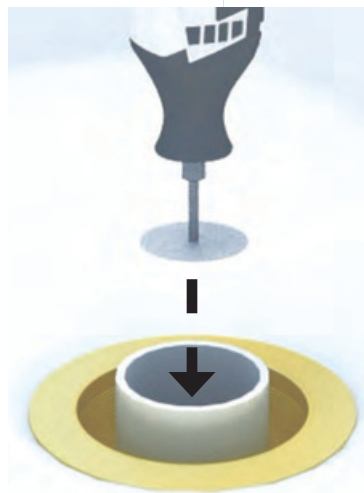
PIN & SLOT ASSEMBLY:

Your shower features a pin and slot system that enables you to install all panels from the front finished side without requiring rear access. Begin by using the 100% silicone adhesive applying to the base ledge as shown encircling the single pin and any shipping bolt holes on the ledge. (see image AP SH 29) Lift wall panel into place guiding the wall over the alignment pin. (see image AP SH 30) Check alignment of the tile grout line (see image AP SH 31) then secure wall to studs with screws, shimming where necessary to ensure wall surfaces are flush. (see image AP SH 32) Wipe away any excess adhesive that may have squeezed out.



AP SH 25

AP SH 26



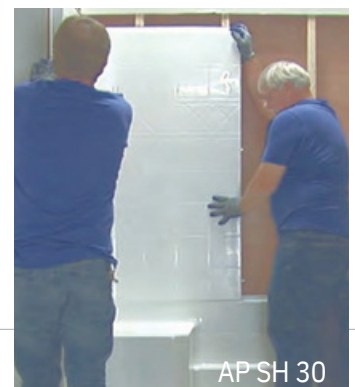
AP SH 27



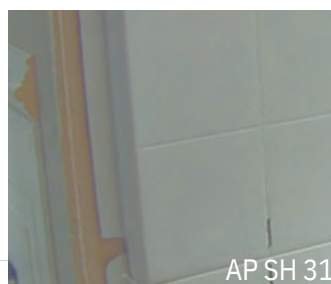
AP SH 28



AP SH 29



AP SH 30



AP SH 31



AP SH 32

VALVE INSTALLATION:

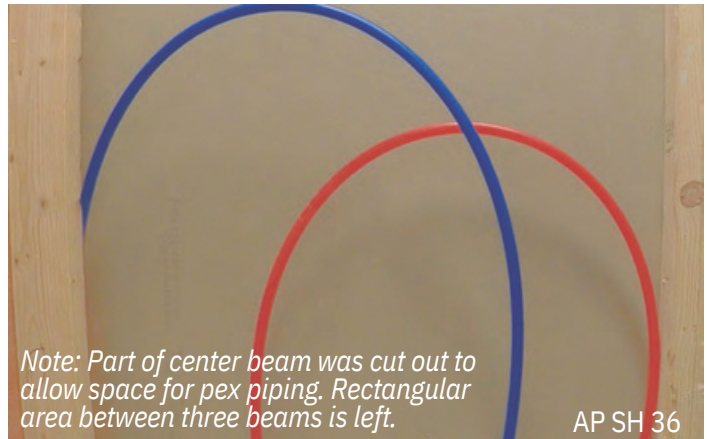
Before installing the valve wall you must first install the valve. Refer to valve manufacturer's instructions for conventional sweat installations.

QUICK CONNECT PEX INSTALLATIONS.

This instruction will demonstrate the installation of a valve with pex connections. Prepare a framing cove as shown to receive pex pipe in a looped pattern to prevent kinking and allow ease of connection from the valve to the water supplies. (see image AP SH 36) Find the desired location of your valve and apply protective masking tape over the area to be cut. Mark the center of your valve and drill a hole in the diameter listed in your valve instructions. (see image AP SH 33) Mount the valve directly to the panel by connecting the front trim plate to the valve body using the mounting screws provided by the valve manufacturer. (see image AP SH 34) Next, mount the drop ear elbow as shown. (see image AP SH 35) Note, if your existing shower supply is higher than the new shower wall panel, leave in place and then connect to your new valve.

INSTALL VALVE WALL:

Using the 100% silicone, apply to all interior seams. (see image AP SH 37) Rest the panel on a bucket as shown during water connection to avoid chipping the panel or the pan. (see image AP SH 38)



WATER TEST FOR LEAKS:

While the wall is resting on the bucket and fully connected, now is the time to turn the water back on and test for leaks. (see image AP SH 41) Install wall by starting at the center seam rotating into place. (see image AP SH 42) Check alignment of the tile grout line then secure wall to studs with screws shimming where necessary to ensure wall surfaces are flush. (see image AP SH 43) Wipe away any excess adhesive that may have squeezed out.

INSTALLATION OF ACCESSORIES:

Your shower is fully reinforced and ready to receive surface mount accessories now or anytime in the future.

It is highly recommended that the client be involved in identifying the ideal placement of accessories according to their needs.



TIP:

Always mark, drill and silicone in a circular pattern around pilot holes for all accessories. (see images AP SH 44, 45, 46)



FINISH CAULKING:

The unit is designed to allow a one eighth inch gap at the seams. Caulk all seams as well as the front edge of the threshold. (see images AP SH 47 & 48) Do not use your shower until caulk is cured. See caulk instructions for cure time. A premium caulk is recommended.

FLANGE TRIM OPTION:

For fast 2 day installations a 3” white flange trim molding kit is an available option that transitions painted or wall papered drywall finishes to the shower covering a gap of 1-1/4” or less. (see image AP SH 49) During the removal of your existing tub or shower, it is recommended that you cut the wall board away approximately 1” beyond the perimeter or outside edge of the nailing flange of your shower unit.

This option will save time and money.

WATER SPLASH CONTROL:

A weighted shower curtain is recommended and available for purchase. When installed properly it provides an effective and safe solution for keeping water in your low threshold shower during use. Please note that it is important that the curtain be hung at a height that allows it to make contact with the floor.

Congratulations, you have successfully installed your Freedom easy step shower providing years of safety and independence.

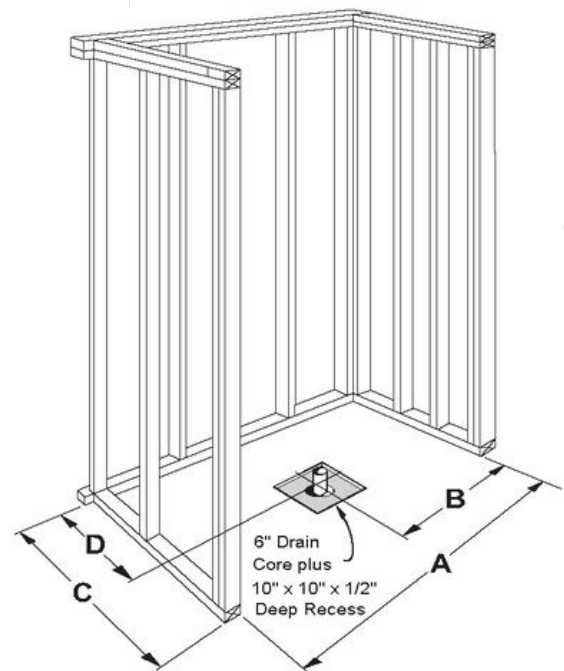
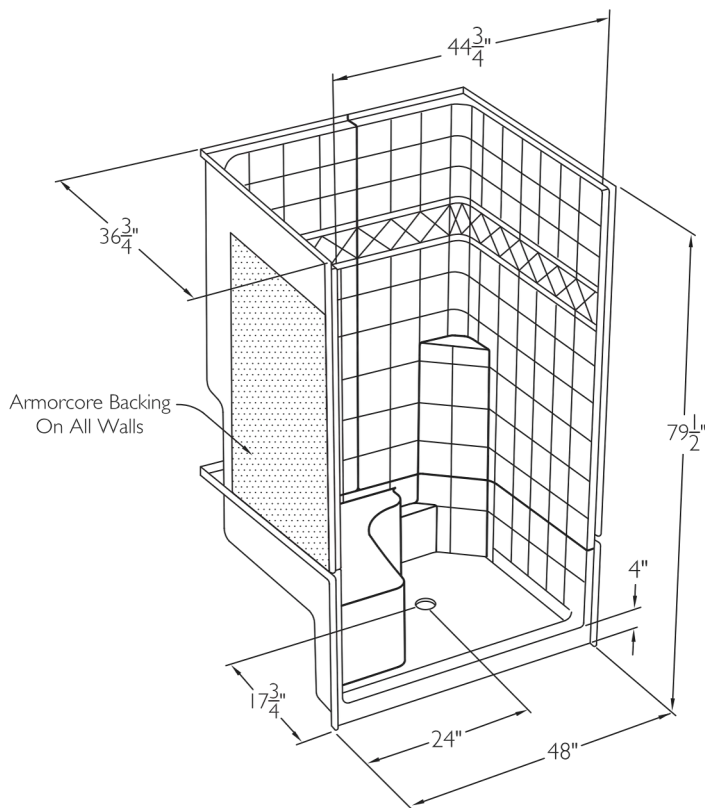
GLASS ENCLOSURE OPTION:

Unlike most modular shower systems, glass enclosures are an option. Our heavy duty wall construction and tight radius corners are designed to receive fixed glass panel shields, bypass and swing hinged doors. For best results, it is recommended a local glass enclosure professional determine measurements, materials and provide turnkey installation.



Model No. APF3648SH 3P R/L

Left Handed Unit



Framing Dimensions

Model	A	B	C	D
APF3648SH3P	48 1/4"	24 1/8"	37"	19"